

# HAMPTON BAY<sup>®</sup>

---

## DESIGNER SERIES



### CABINET SPECIFICATION GUIDE

Special Order Vendor #60008081  
D29K69210-44.AWMQ2025





# CONTENTS

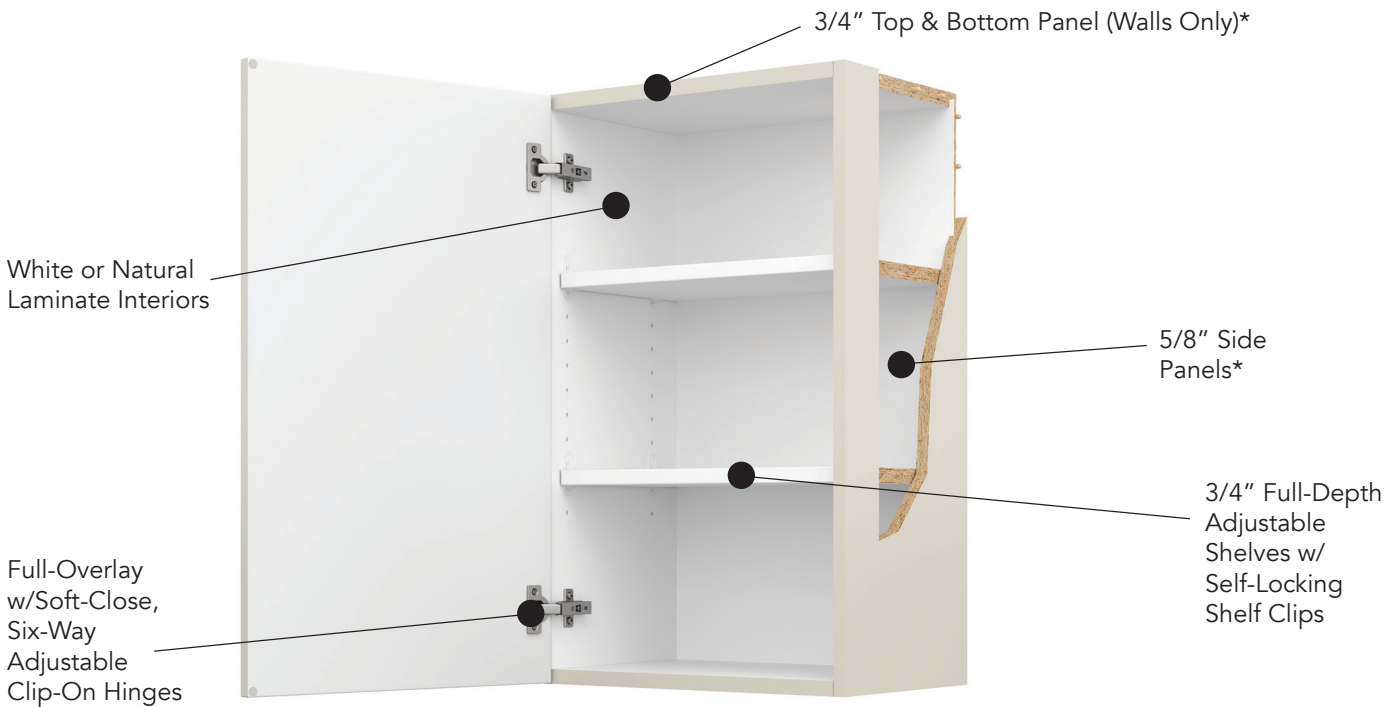
|  |        |
|--|--------|
| Frameless Cabinet Construction . . . . . | 03, 06 |
| Door Styles & Finishes . . . . .         | 04-05  |
| Cabinet Reveals & Dimensions . . . . .   | 07     |
| Wall Cabinets. . . . .                   | 8-10   |
| Base Cabinets . . . . .                  | 10-14  |
| Tall Cabinets . . . . .                  | 15     |
| Oven Cabinets . . . . .                  | 16     |
| Vanity Cabinets . . . . .                | 16     |
| Accessories . . . . .                    | 17-19  |
| Customer Care . . . . .                  | 20-21  |
| Warranty . . . . .                       | 22     |

 All Hampton Bay® Designer Series products meet or exceed the stringent performance requirements established by the Kitchen Cabinet Manufacturers Association (KCMA). The KCMA Performance & Construction Standards ANSI/KCMA A161.1 is recognized and overseen by the American National Standards Institute. This standard also meets the HUD specification 4910.1 Paragraph 611-1.1, Minimum Property Standards for Housing.



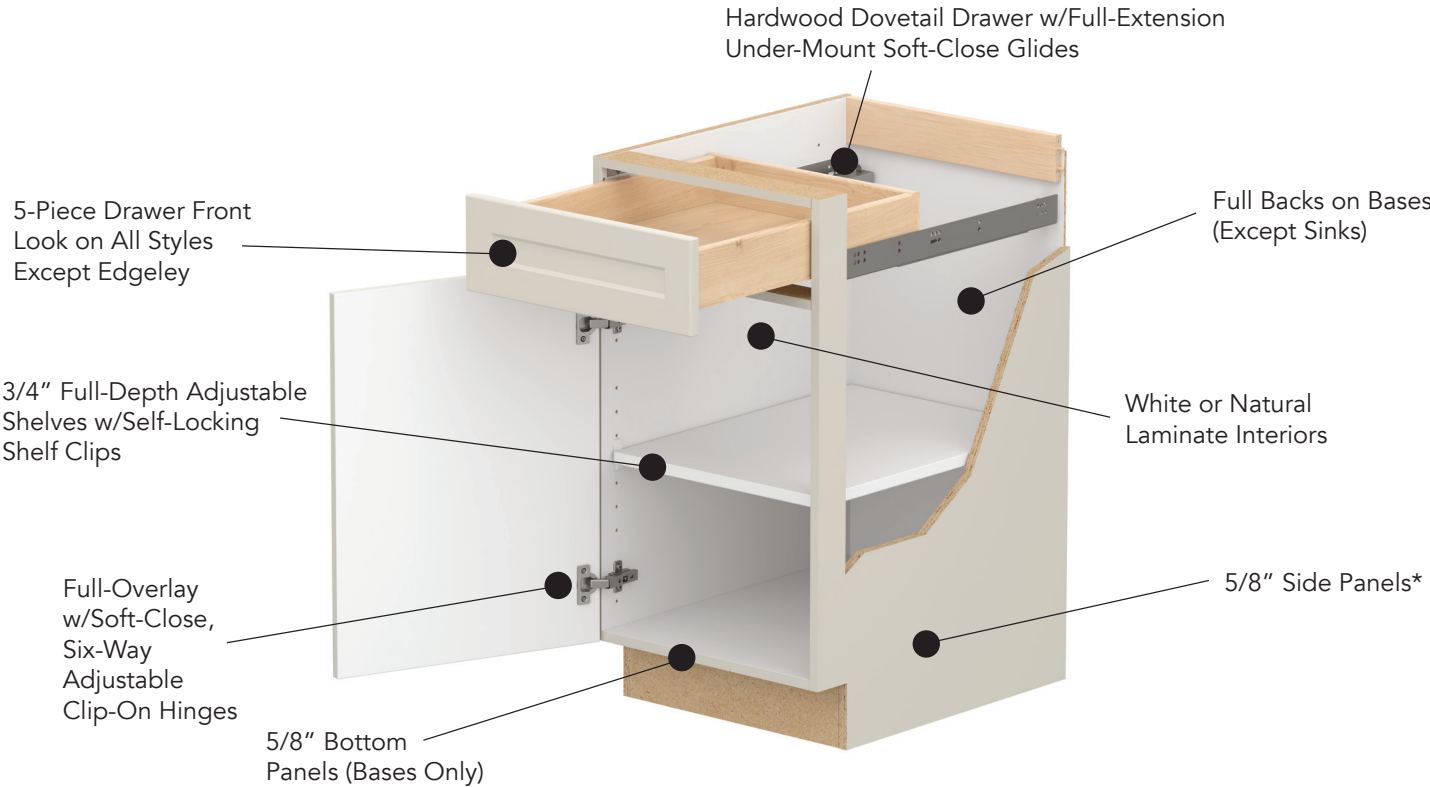
CONSTRUCTION

## WALL CONSTRUCTION



*Interior color varies by finish, refer to Finish Details on p. 6 for more details.*

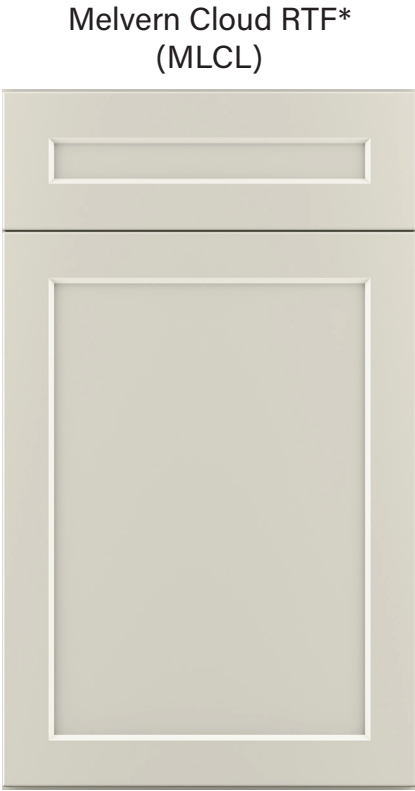
## BASE CONSTRUCTION



***\*Top, bottom, back and shelves of any cabinet that features a matching interior are constructed from 5/8" material.***

DOOR STYLES  
AND FINISHES

DOOR STYLES  
AND FINISHES



Order a Sample Door on  
**homedepot.com**

DOOR MODEL # OMSID

**EDGELEY WHITE**

HBDSSD-LX-30 301814733

**EDGELEY DRIFTWOOD**

HBDSSD-LX-79A 301814725

**ELGIN WHITE**

HBDSSD-HM-30 301814724

**MELVERN WHITE**

HBDSSD-MSF-30 301814638

**MELVERN CLOUD**

HBDSSD-MSF-86R 328721718

**MELVERN HERON GRAY**

HBDSSD-MSF-83R 306861342

**MELVERN STORM GRAY**

HBDSSD-MSF-37R 317913534

**MELVERN FOREST**

HBDSSD-MSF-43R 329377497

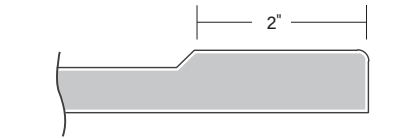
**RENLY SANDSTONE**

HBDSSD-KDN-45R 336798431

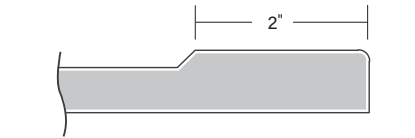
**SOLESTE SPICE**

HBDSSD-SHM-19 301814714

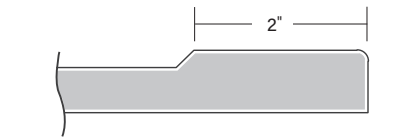
\* Doors in RTF styles feature front and sides wrapped to match cabinet exterior with white melamine back



Melvern Heron Gray RTF\*  
(MLGR)



Melvern Storm Gray RTF\*  
(MST)



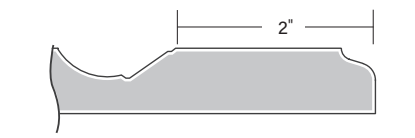
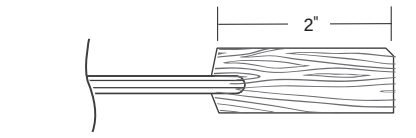
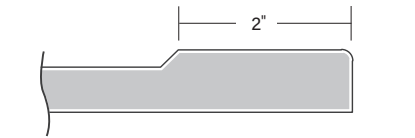
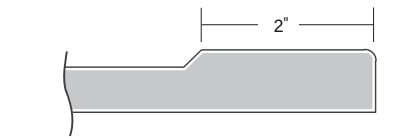
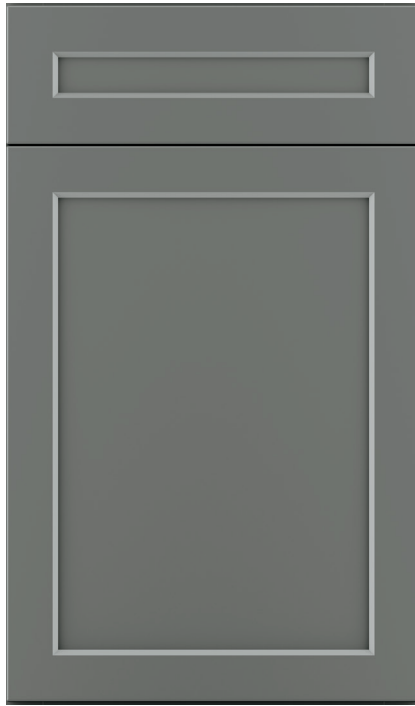
Soleste Spice  
(SHSP)



Renly Sandstone RTF\*  
(RLSN) **NEW**



Elgin White RTF\*  
(ELWH)



General Construction

Cabinets are frameless design with full access and full overlay styling. All panels and rail components are joined with engineered dowels, glue, screws, staples or a combination of those components appropriate to the typical use of the cabinet.

All frameless cabinet boxes are made from commercial grade furniture board with laminated, water resistant (not waterproof) surfaces.

Soft Close Hinge

Standard doors feature 6-way adjustable, Soft Close clip-on hinges with 110° opening (except where noted).



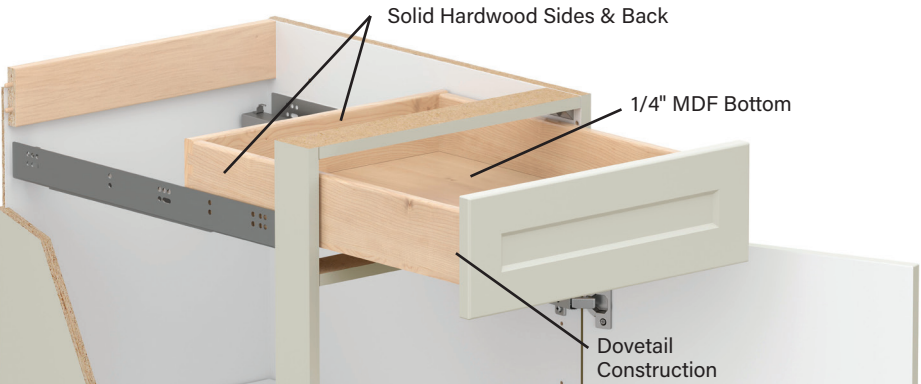
Shelves

Standard cabinet shelves are full-depth, 3/4" adjustable shelves with self-locking shelf clips. Shelves in cabinets 36" or wider also include a center shelf pin.



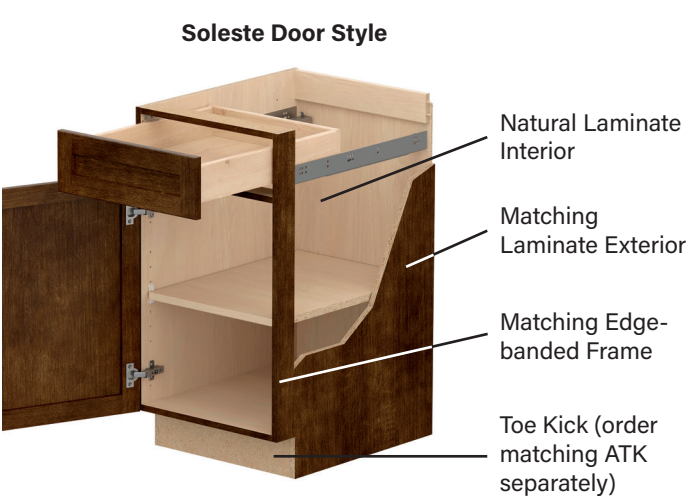
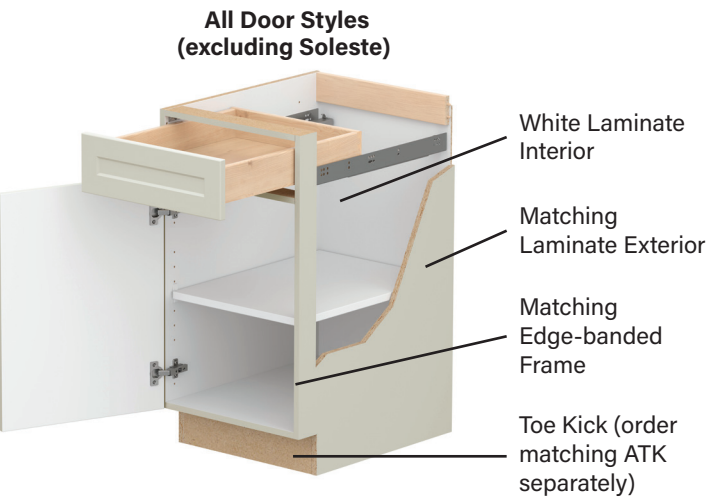
Drawer Construction

All drawers feature a hardwood drawer box with dovetail construction. Standard drawers and large drawers 24" wide or under feature 75lb rated under-mount Soft Close glides. Large drawers 30" or wider feature 100lb rated heavy-duty side-mount Soft Close glides.

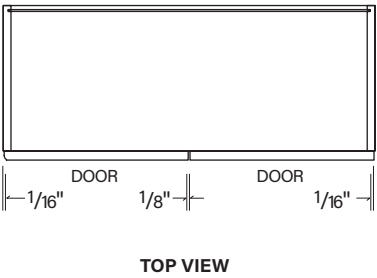
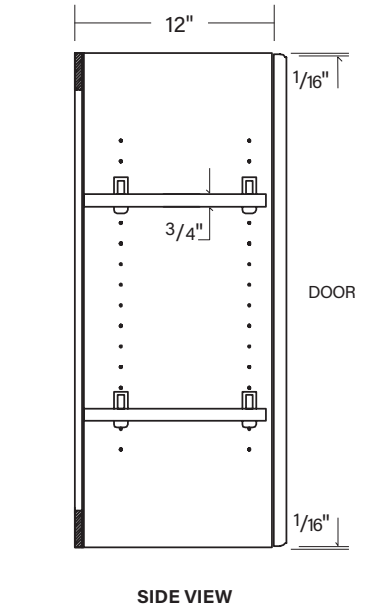


|                  |                            |
|------------------|----------------------------|
|                  |                            |
| STANDARD DRAWERS |                            |
| A                | Drawer depth 21"           |
| B                | Travel (extension) 20 1/4" |
| C                | Clearance inside 3 3/4"    |

Finish Details NEW UPDATE

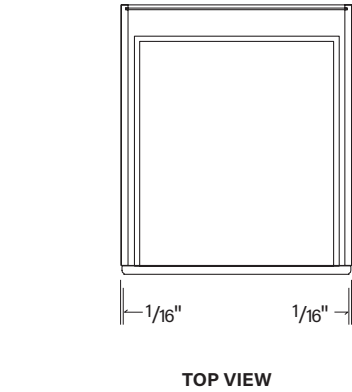
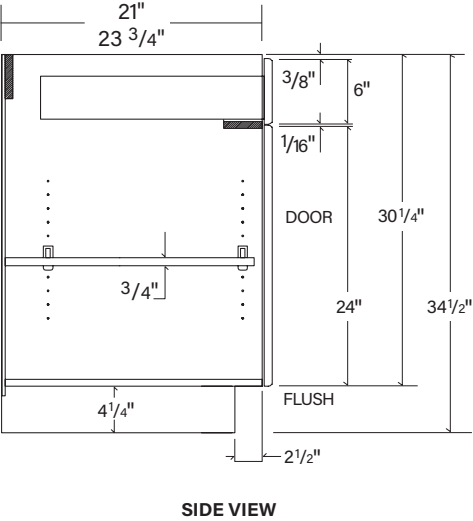


Wall Cabinets



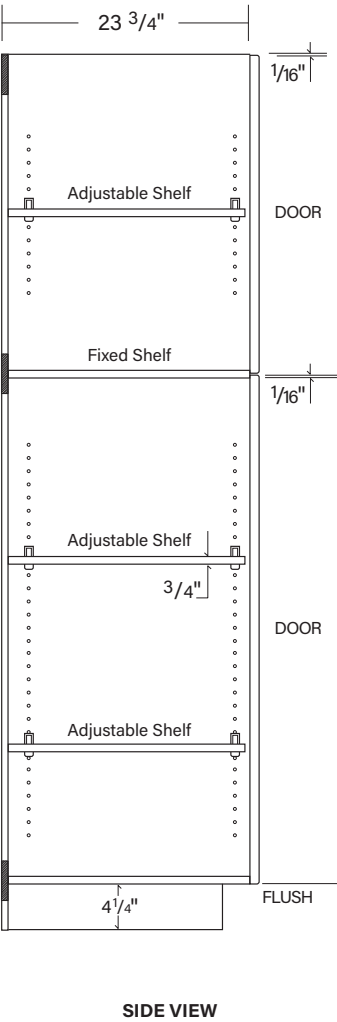
- 24" wall cabinets include one full-depth adjustable shelf
- 30" and 36" wall cabinets include two full-depth adjustable shelves
- 42" wall cabinets include three full-depth adjustable shelves

Base / Vanity Cabinets



- Standard base cabinets include one full-depth adjustable shelf

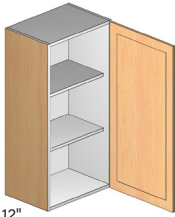
Tall Cabinets



| MINIMUM CEILING HEIGHT |          |          |
|------------------------|----------|----------|
| 84" HIGH               | 90" HIGH | 96" HIGH |
| 86 3/4"                | 92 9/16" | 98 7/16" |

- Tall cabinets include one full-depth fixed shelf
- 84" and 90" tall cabinets include three full-depth adjustable shelves
- 96" tall cabinets include four full-depth adjustable shelves
- Top door(s) on tall cabinets align with wall cabinet door(s)

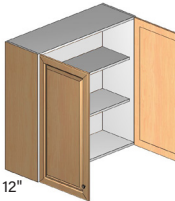
Single Door Wall Cabinet 12" Deep (W)



- 30" and 36" high wall cabinets include two full-depth adjustable shelves
- 42" high wall cabinets include three full-depth adjustable shelves

| WIDTH | MODEL NUMBER |          |          |
|-------|--------------|----------|----------|
|       | 30" HIGH     | 36" HIGH | 42" HIGH |
| 9"    | W930         | W936     | W942     |
| 12"   | W1230        | W1236    | W1242    |
| 15"   | W1530        | W1536    | W1542    |
| 18"   | W1830        | W1836    | W1842    |
| 21"   | W2130        | W2136    | W2142    |

Double Door Wall Cabinet 12" Deep (W)



- 30" and 36" high wall cabinets include two full-depth adjustable shelves
- 42" high wall cabinets include three full-depth adjustable shelves

| WIDTH | MODEL NUMBER |          |          |
|-------|--------------|----------|----------|
|       | 30" HIGH     | 36" HIGH | 42" HIGH |
| 24"   | W2430        | W2436    | W2442    |
| 27"   | W2730        | W2736    | W2742    |
| 30"   | W3030        | W3036    | W3042    |
| 33"   | W3330        | W3336    | W3342    |
| 36"   | W3630        | W3636    | W3642    |

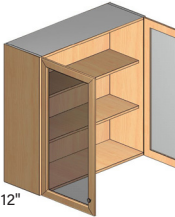
Glass Door Cabinet w/ Matching Interior 12" Deep (WGD)



- Open frame door with clear glass
- Door profile will complement standard door profile ordered
- Cabinets feature a matching laminate interior
- Glass is tempered
- 30" and 36" high wall cabinets include two full-depth adjustable shelves
- 42" high wall cabinets include three full-depth adjustable shelves

| WIDTH | MODEL NUMBER |          |          |
|-------|--------------|----------|----------|
|       | 30" HIGH     | 36" HIGH | 42" HIGH |
| 15"   | WGD1530      | WGD1536  | WGD1542  |
| 18"   | WGD1830      | WGD1836  | WGD1842  |

Glass Door Cabinet w/ Matching Interior 12" Deep (WGD)



- Open frame door with clear glass
- Door profile will complement standard door profile ordered
- Cabinets feature a matching laminate interior
- Glass is tempered
- 30" and 36" high wall cabinets include two full-depth adjustable shelves
- 42" high wall cabinets include three full-depth adjustable shelves

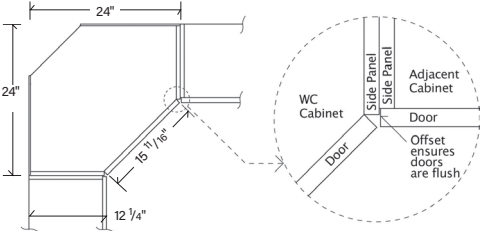
| WIDTH | MODEL NUMBER |          |          |
|-------|--------------|----------|----------|
|       | 30" HIGH     | 36" HIGH | 42" HIGH |
| 30"   | WGD3030      | WGD3036  | WGD3042  |
| 36"   | WGD3630      | WGD3636  | WGD3642  |

Wall Diagonal Corner Cabinet (WC)

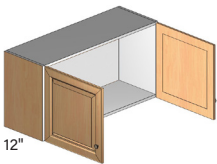


- 30" and 36" high wall cabinets include two adjustable shelves
- 42" high wall cabinets include three full-depth adjustable shelves

| WIDTH | MODEL NUMBER |          |          |
|-------|--------------|----------|----------|
|       | 30" HIGH     | 36" HIGH | 42" HIGH |
| 24"   | WC2430       | WC2436   | WC2442   |



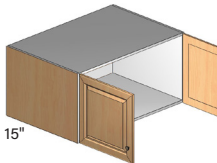
Wall Bridge Cabinet 12" Deep (W)



- 12", 15" and 18" high wall cabinets have no shelf
- 24" high wall cabinets include one full-depth adjustable shelf

| WIDTH | MODEL NUMBER |          |          |          |
|-------|--------------|----------|----------|----------|
|       | 12" HIGH     | 15" HIGH | 18" HIGH | 24" HIGH |
| 24"   | —            | —        | —        | W2424    |
| 27"   | —            | —        | —        | W2724    |
| 30"   | W3012        | W3015    | W3018    | W3024    |
| 33"   | W3312        | —        | W3318    | W3324    |
| 36"   | W3612        | W3615    | W3618    | W3624    |

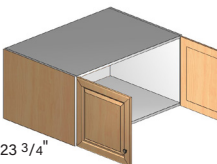
Wall Bridge Cabinet 15" Deep (W)



- 12" and 18" high wall cabinets have no shelf
- 24" high wall cabinets include one full-depth adjustable shelf

| WIDTH | MODEL NUMBER |          |          |          |
|-------|--------------|----------|----------|----------|
|       | 12" HIGH     | 15" HIGH | 18" HIGH | 24" HIGH |
| 30"   | W301215      | —        | W301815  | W302415  |
| 33"   | W331215      | —        | W331815  | W332415  |
| 36"   | W361215      | —        | W361815  | W362415  |

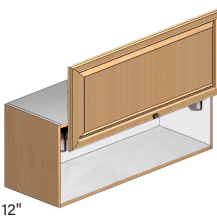
Wall Bridge Cabinet 24" Deep (W)



- 18" high wall cabinets have no shelf
- 24" high wall cabinets include one full-depth adjustable shelf

| WIDTH | MODEL NUMBER |          |          |          |
|-------|--------------|----------|----------|----------|
|       | 12" HIGH     | 15" HIGH | 18" HIGH | 24" HIGH |
| 33"   | —            | —        | W331824  | W332424  |
| 36"   | —            | —        | W361824  | W362424  |

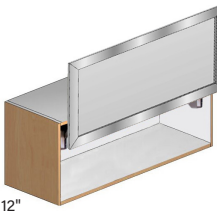
Wall Lift Up Cabinet (WLU)



- Features 6-way adjustable non-Soft Close hinge
- No shelf

| WIDTH | MODEL NUMBER |          |          |          |
|-------|--------------|----------|----------|----------|
|       | 12" HIGH     | 15" HIGH | 18" HIGH | 24" HIGH |
| 30"   | —            | —        | WLU3018  | —        |
| 36"   | —            | —        | WLU3618  | —        |

Wall Lift Up Aluminum Cabinet (WLUA)



- Aluminum frame door with frosted glass
- Glass is tempered
- Features standard interior
- Features 6-way adjustable non-Soft Close hinge
- No shelf

| WIDTH | MODEL NUMBER |          |          |          |
|-------|--------------|----------|----------|----------|
|       | 12" HIGH     | 15" HIGH | 18" HIGH | 24" HIGH |
| 30"   | —            | —        | WLUA3018 | —        |
| 36"   | —            | —        | WLUA3618 | —        |

Framed Open Wall Cabinet 12" Deep (WOS)



- Frames on wood door styles are 1 1/2" wide
- Frames on RTF door styles are 2" wide
- Frames are 3/4" thick to be flush with doors on adjacent cabinets
- Cabinets feature a matching laminate interior
- 30" and 36" high wall cabinets include two full-depth adjustable shelves
- 42" high wall cabinets include three full-depth adjustable shelves

| WIDTH | MODEL NUMBER |          |          |
|-------|--------------|----------|----------|
|       | 30" HIGH     | 36" HIGH | 42" HIGH |
| 15"   | WOS1530      | WOS1536  | WOS1542  |
| 18"   | WOS1830      | WOS1836  | WOS1842  |
| 30"   | WOS3030      | WOS3036  | WOS3042  |
| 36"   | WOS3630      | WOS3636  | WOS3642  |

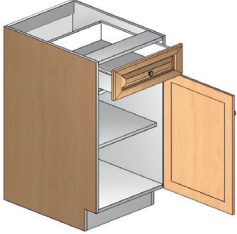
Decorative End Panel for Wall Cabinets (D)



- Must be field installed
- Actual size of end panels 1/8" smaller in both width and height (example: D1230 actual dimensions are 11 7/8" x 29 7/8")

| WIDTH | MODEL NUMBER |          |          |
|-------|--------------|----------|----------|
|       | 30" HIGH     | 36" HIGH | 42" HIGH |
| 12"   | D1230        | D1236    | D1242    |
| 15"   | D1530        | —        | —        |
| 18"   | D1830        | —        | —        |

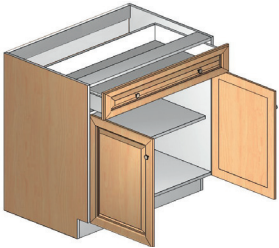
Base Cabinet w/ One Drawer (B)



- Includes one full-depth adjustable shelf

| WIDTH | MODEL NUMBER |
|-------|--------------|
| 12"   | B12          |
| 15"   | B15          |
| 18"   | B18          |
| 21"   | B21          |

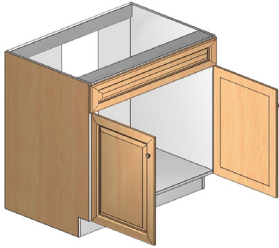
Base Cabinet w/ One Drawer (B)



- Includes one full-depth adjustable shelf

| WIDTH | MODEL NUMBER |
|-------|--------------|
| 24"   | B24          |
| 27"   | B27          |
| 30"   | B30          |
| 33"   | B33          |
| 36"   | B36          |

Sink Base Cabinet/Accessible Sink Base Cabinet (BS/BSH)

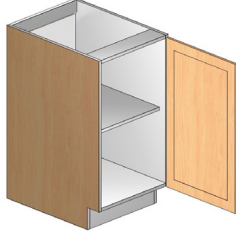


- 6" tall header
- Partial back eliminates need to cut out
- ADA adaptable version (BSH36) has a removable bottom and toe kick

| WIDTH | MODEL NUMBER |       |
|-------|--------------|-------|
|       | STANDARD     | ADA   |
| 30"   | BS30         | —     |
| 33"   | BS33         | —     |
| 36"   | BS36         | BSH36 |

BASE CABINETS

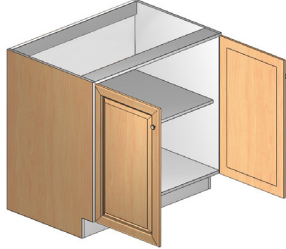
Base Cabinet w/ Full Height Door (BF)



- Includes one full-depth adjustable shelf

| WIDTH | MODEL NUMBER |
|-------|--------------|
| 9"    | BF9          |
| 12"   | BF12         |
| 15"   | BF15         |
| 18"   | BF18         |
| 21"   | BF21         |

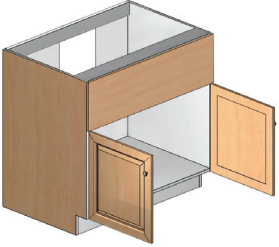
Base Cabinet w/ Two Full Height Doors (BF)



- Includes one full-depth adjustable shelf

| WIDTH | MODEL NUMBER |
|-------|--------------|
| 24"   | BF24         |
| 27"   | BF27         |
| 30"   | BF30         |
| 33"   | BF33         |
| 36"   | BF36         |

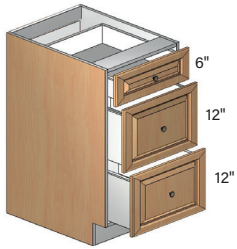
Apron Sink Base (BSA)



- 12" trimmable apron front can be trimmed to any dimension or fully removed
- Partial back eliminates need to cut out
- Accommodates most apron sinks and professional cooktops

| WIDTH | MODEL NUMBER |
|-------|--------------|
| 36"   | BSA36        |

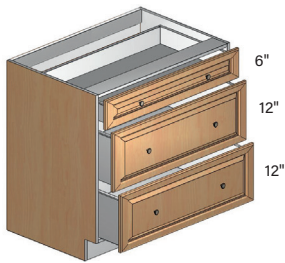
Base Cabinet w/ 3 Drawers (B3D)



- All drawers feature standard under-mount Soft Close glides

| WIDTH | MODEL NUMBER |
|-------|--------------|
| 12"   | B3D12        |
| 15"   | B3D15        |
| 18"   | B3D18        |
| 21"   | B3D21        |
| 24"   | B3D24        |

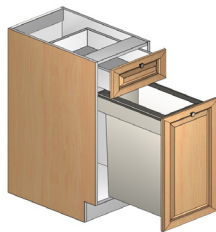
Base Pot & Pan Cabinet w/ Three Drawers (B3PP)



- Top drawer features standard under-mount Soft Close glides
- Large drawers feature heavy-duty side-mounted Soft Close glides

| WIDTH | MODEL NUMBER |
|-------|--------------|
| 30"   | B3PP30       |
| 33"   | B3PP33       |
| 36"   | B3PP36       |

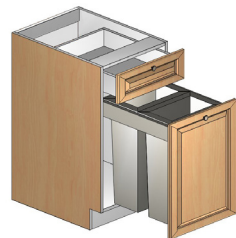
Base Cabinet w/ Single Waste Bin (BWS)



- Top drawer features standard under-mount Soft Close glides
- Pull-out unit features heavy-duty side-mounted Soft Close glides
- Includes one 12-gallon waste bin

| WIDTH | MODEL NUMBER |
|-------|--------------|
| 15"   | BWS15        |

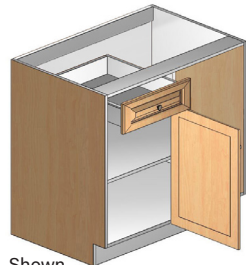
Base Cabinet w/ Dual Waste Bins (BWD)



- Top drawer features standard under-mount Soft Close glides
- Pull-out unit features heavy-duty side-mounted Soft Close glides
- Includes two 12-gallon waste bins

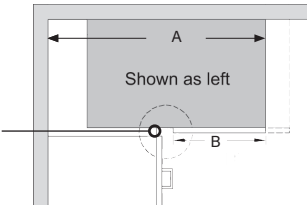
| WIDTH | MODEL NUMBER |
|-------|--------------|
| 18"   | BWD18        |

Base Blind Corner Cabinet w/ Drawer (BB)



Shown as right

For proper hardware clearance on adjacent cabinet, a 3" filler is recommended.

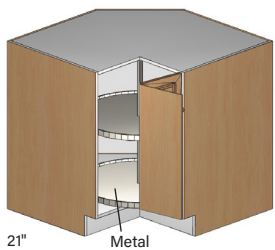


- Hinges mount to the back of the blind panel
- Includes one full-depth adjustable shelf
- Hinging specification also indicates the position of the blind side (i.e., left hinge means blind panel is on the left side)
- Drawer features standard under-mount Soft Close glides
- Minimum 1" filler required - order AF330 separately

| A WALL SPACE | ACTUAL CABINET WIDTH | B DOOR AND DRAWER WIDTH | MINIMUM PULL* | MAXIMUM PULL | MODEL NUMBER  |
|--------------|----------------------|-------------------------|---------------|--------------|---------------|
| 39"          | 30"                  | 12"                     | 37"           | 41"          | BB39L / BB39R |
| 42"          | 33"                  | 15"                     | 40"           | 44"          | BB42L / BB42R |

\*Hardware clearance for the blind cabinet has been calculated into the minimum pull

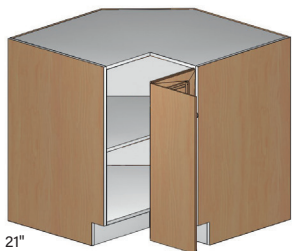
Base Lazy Susan Corner Cabinet (BLS)



- Includes two 32" independently spinning steel wire baskets
- 165° side hinges and knuckle hinges in center
- Features non-Soft Close hinge
- 3" gap at back
- Requires minimum of 32" to fit through doorway
- See Lazy Susan installation details below for more information

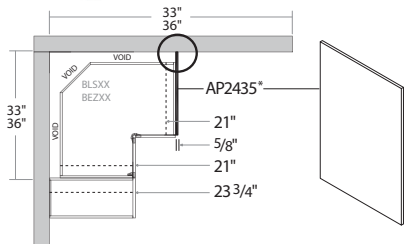
| WIDTH | MODEL NUMBER |
|-------|--------------|
| 36"   | BLS36        |

Base EZ Reach Corner Cabinet (BEZ)



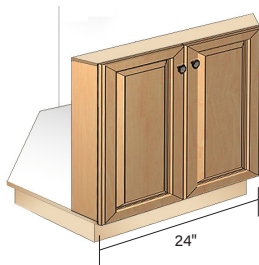
- Includes one full-depth adjustable shelf
- 165° side hinges and knuckle hinges in center
- Features non-Soft Close hinge
- 3" gap at back
- Requires minimum of 32" to fit through doorway

| WIDTH | MODEL NUMBER |
|-------|--------------|
| 33"   | BEZ33        |
| 36"   | BEZ36        |



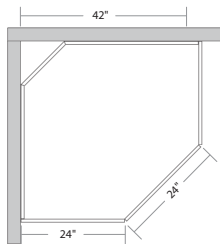
\*Note: If either side of the BEZ/BLS is exposed, then order AP2435 side panel to cover gap

Corner Sink Base Kit (BSCK)



- Requires adjacent cabinet, end panel, dishwasher return or base column
- Requires 42" x 42" space
- Cabinets include two 12" x 30" doors
- Floor has parts sub-assembled with pocket screws for quick installation
- Back corner clipped for out of square corners
- Doors feature standard Soft Close hinges
- Cleat required to support countertop (not included)

| WIDTH | MODEL NUMBER |
|-------|--------------|
| 24"   | BSCK42       |



Dishwasher Return (BDE/BDEC)

- Side panel is same depth as standard cabinet, front fascia flush with doors
- Finished on one side only
- Order BDE3 if end requires clearance for an electrical outlet

| WIDTH  | MODEL NUMBER |
|--------|--------------|
| 3"     | BDE3         |
| 1 1/4" | BDEC1        |

Base Column (BCB)

- Side panels are same depth as standard cabinet, front fascia flush with doors
- Finished on both sides

| WIDTH | MODEL NUMBER |
|-------|--------------|
| 3"    | BCB3         |

Roll-Outs Standard Kit (AROSTD) - Required for ARO's

- Kit includes: two side mounts, screws and installation instructions
- Two kits required for tall cabinets
- Holes are pre-drilled for easy roll-out installation
- Required for AROs

| MODEL NUMBER |
|--------------|
| AROSTD       |

Roll-Outs (Loose) for Cabinets (ARO)

- Must be field installed
- Must order AROSTD (above) for installation
- Hardwood dovetail drawer with Soft Close glides
- Sold individually
- For use in 24" deep cabinets

| SINGLE DOOR WIDTH | MODEL NUMBER | DOUBLE DOOR WIDTH | MODEL NUMBER |
|-------------------|--------------|-------------------|--------------|
| 12"               | ARO12        | 24"               | ARO24        |
| 15"               | ARO15        | 27"               | ARO27        |
| 18"               | ARO18        | 30"               | ARO30        |
| 21"               | ARO21        | 33"               | ARO33        |
|                   |              | 36"               | ARO36        |

Decorative End Panels for Base Cabinets (D)

- Must be field installed
- Can be fastened to the side of any standard size cabinet
- Actual size of end panels 1/8" smaller in both width and height (example: D2430 actual dimensions are 23 7/8" x 29 7/8")

| WIDTH | MODEL NUMBER |
|-------|--------------|
| 24"   | D2430        |

Tall Pantry 24" Deep w/ 2 Doors (T)

- 84" and 90" high tall cabinets include one full-depth fixed shelf and three full-depth adjustable shelves
- 96" high tall cabinets include one full-depth fixed shelf and four full-depth adjustable shelves

| WIDTH | MODEL NUMBER |          |          |
|-------|--------------|----------|----------|
|       | 84" HIGH     | 90" HIGH | 96" HIGH |
| 18"   | T1884        | T1890    | T1896    |

Tall Pantry 24" Deep w/ 4 Doors (T)

- 84" and 90" high tall cabinets include one full-depth fixed shelf and three full-depth adjustable shelves
- 96" high tall cabinets include one full-depth fixed shelf and four full-depth adjustable shelves

| WIDTH | MODEL NUMBER |          |          |
|-------|--------------|----------|----------|
|       | 84" HIGH     | 90" HIGH | 96" HIGH |
| 24"   | T2484        | T2490    | T2496    |

Tall Built-In Refrigerator Panel (TREC)

- Side panel is same depth as standard cabinet, fascia flush with doors
- Finished on one side only
- Return panel is 5/8" thick

| WIDTH  | DEPTH   | HEIGHT | MODEL NUMBER |
|--------|---------|--------|--------------|
| 1 1/4" | 24 1/2" | 96"    | TREC196      |

Tall Panel (AP)

- Finished on both sides

| WIDTH | DEPTH | HEIGHT | MODEL NUMBER |
|-------|-------|--------|--------------|
| 5/8"  | 24"   | 96"    | AP2496B      |

Oven Cabinet - Double (OVD)

Use for standard double ovens or split combo



- Divider for split ovens included
- Drawer front is 6" tall, interior clearance is 4 1/4"
- 90" and 96" high oven cabinets include one full-depth adjustable shelf in upper section
- Includes plywood oven support panel

| WIDTH | MODEL NUMBER |          |          |
|-------|--------------|----------|----------|
|       | 84" HIGH     | 90" HIGH | 96" HIGH |
| 33"   | OVD3384      | OVD3390  | OVD3396  |

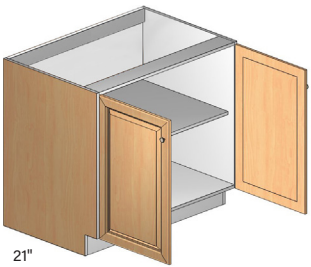
Double (OVD)  
Double Oven Cabinet

| CUTOUT WIDTH |         |
|--------------|---------|
| ACTUAL       | MAXIMUM |
| 24 7/8"      | 29 7/8" |

| CUTOUT HEIGHT |         |
|---------------|---------|
| ACTUAL        | MAXIMUM |
| 42 3/4"       | 52 3/4" |

VANITY CABINETS

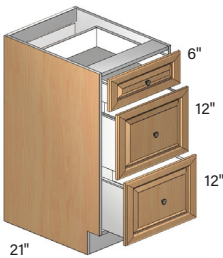
Vanity Tall Base Cabinet w/ Two Full Doors (VTF)



- Includes one full-depth adjustable shelf
- 34 1/2" high

| WIDTH | MODEL NUMBER |
|-------|--------------|
| 24"   | VTF24        |
| 27"   | VTF27        |
| 30"   | VTF30        |
| 33"   | VTF33        |
| 36"   | VTF36        |

Vanity Tall Base Cabinet w/ Three Drawers (VT3D)

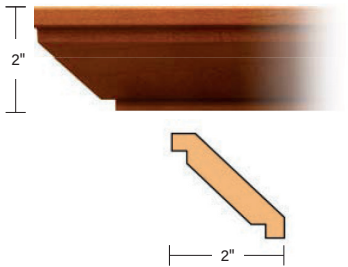


- All drawers feature standard under-mount Soft Close glides
- 34 1/2" high

| WIDTH | MODEL NUMBER |
|-------|--------------|
| 12"   | VT3D12       |
| 15"   | VT3D15       |
| 18"   | VT3D18       |
| 21"   | VT3D21       |
| 24"   | VT3D24       |

MOLDING

Shaker Crown Molding



MODEL NUMBER

AMC4

- 96" length
- RTF finishes are RTF vinyl wrapped MDF

Batten Molding

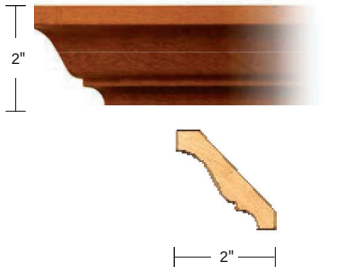


MODEL NUMBER

AMB

- 96" length
- 1/4" thickness
- RTF finishes are RTF vinyl wrapped MDF

Traditional Crown Molding



MODEL NUMBER

AMC5

- Available in White and Heron Gray finishes only
- 96" length
- RTF finishes are RTF vinyl wrapped MDF

Outside Corner Molding

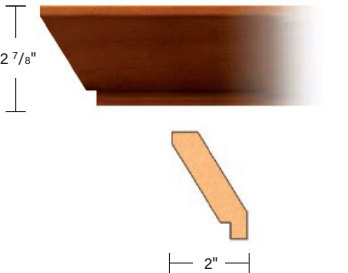


MODEL NUMBER

AMOC

- Not available in Driftwood
- 96" length
- RTF finishes are RTF vinyl wrapped MDF

Transitional Crown Molding



MODEL NUMBER

AMC10

- 96" length
- RTF finishes are RTF vinyl wrapped MDF
- Spice finish is wood veneer

Base Shoe Molding



MODEL NUMBER

AMSH

- 96" length
- 3/4" thickness
- RTF finishes are RTF vinyl wrapped MDF

Economy Light Rail Molding

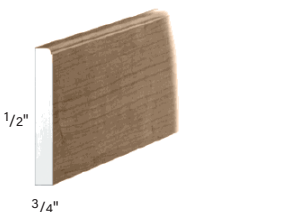


MODEL NUMBER

AMLR1

- 96" length
- 3/4" thickness
- RTF finishes are RTF vinyl wrapped MDF
- Spice finish is wood veneer

Base Board Molding



MODEL NUMBER

AMBB

- 96" length
- 3/4" thickness
- RTF finishes are RTF vinyl wrapped MDF
- Spice finish is wood veneer

Scribe Molding



MODEL NUMBER

AMS

- 96" length
- 1/4" thickness
- RTF finishes are RTF vinyl wrapped MDF

Toe Kick



MODEL NUMBER

ATK

- 96" length
- 1/4" thickness
- Laminated MDF

FILLERS

Furniture Board Filler (AF)



- Finished on one side only
- AF396 is edgebanded on one long edge

| HEIGHT  | MODEL NUMBER |          |
|---------|--------------|----------|
|         | 3" WIDTH     | 6" WIDTH |
| 30 1/4" | AF330        | —        |
| 36"     | AF336        | —        |
| 42"     | AF342        | —        |
| 96"     | AF396        | AF696    |

PANELS

Panel Ends (AP)

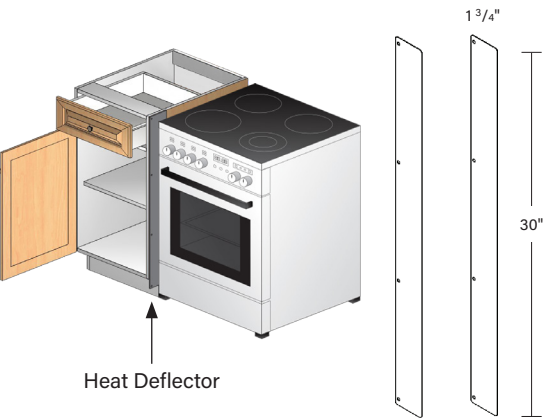


- Grain runs length of panel
- AP2435 is edgebanded on one long edge
- AP4835 is edgebanded on both shorter (35") edges
- AP2496B is edgebanded on one long edge

| USE         | FINISHED SIDES | HEIGHT | WIDTH   | MODEL NUMBER |
|-------------|----------------|--------|---------|--------------|
| Base/Vanity | 1              | 35"    | 23 3/4" | AP2435       |
| Tall        | 2              | 96"    | 23 3/4" | AP2496B      |
| Island Back | 1              | 35"    | 48"     | AP4835       |

HEAT DEFLECTOR

Steel Heat Deflector Kit (AKHD)

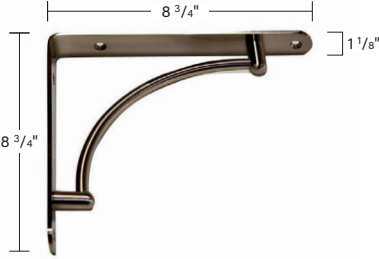


- Recommended for RTF styles
- Includes two 1mm thick steel heat deflectors and eight installation screws

| MODEL NUMBER |
|--------------|
| AKHD         |

METAL CORBEL

Standard (ACBM)



- Use with overhang up to 12"
- Refer to countertop manufacturer's specifications for requirements

| FINISH         | MODEL NUMBER |
|----------------|--------------|
| Brushed Nickel | ACBM9        |

HARDWARE

Standard (AHK1)

NEW PRODUCTS



AHK1-BN



AHK1-BG



AHK1-BLK

| FINISH         | MODEL NUMBER |
|----------------|--------------|
| Brushed Nickel | AHK1-BN      |
| Brushed Gold   | AHK1-BG      |
| Matte Black    | AHK1-BLK     |

Gallery (AHP13.5)

NEW PRODUCTS



AHP13.5-BN



AHP13.5-BG



AHP13.5-BLK

| FINISH         | WIDTH | CENTER | MODEL NUMBER |
|----------------|-------|--------|--------------|
| Brushed Nickel | 6"    | 3"     | AHP13.5-BN   |
| Brushed Gold   | 6"    | 3"     | AHP13.5-BG   |
| Matte Black    | 6"    | 3"     | AHP13.5-BLK  |

Square (AHP14)

NEW PRODUCTS



AHP14-BN



AHP14-BG



AHP14-BLK

| FINISH         | WIDTH  | CENTER | MODEL NUMBER |
|----------------|--------|--------|--------------|
| Brushed Nickel | 5 3/4" | 5"     | AHP14-BN     |
| Brushed Gold   | 5 3/4" | 5"     | AHP14-BG     |
| Matte Black    | 5 3/4" | 5"     | AHP14-BLK    |

TOUCH UP

Replace "xx" with the following finish code:



- CL = Cloud
- DW = Driftwood
- FR = Forest
- GR = Heron Gray
- SN = Sandstone
- SP = Spice
- ST = Storm Gray
- WH = White

| DESCRIPTION  | MODEL NUMBER |
|--------------|--------------|
| Fill Stick   | FS230-xx     |
| Touch Up Pen | FS281-xx     |

About Us

Vendor Information

**Special Order Vendor Number:** 60008081  
**Address:** Post Office Box 1980, Winchester, VA 22604  
**Customer Care Email Address:** HBDesignerSeries\_CC@woodmark.com  
**Customer Care Phone Number:** (800) 230-5661  
**Customer Care Service Hours:** Monday through Friday, 8:00 am to 7:00 pm (EST)

2020 Catalog

HBDSXP  
HBDSXP2

Website

Visit the Hampton Bay Designer Series website at **www.hamptonbaykitchens.com** for more product information and design ideas.

Minimum Order

A five cabinet minimum applies to all Hampton Bay Designer Series orders; accessories are not included in the five cabinet minimum.

Order Processing and Lead-Time

Special Order Hampton Bay Designer Series cabinet orders ship in two weeks. Some orders and store locations, including those outside the Continental U.S., may require more delivery time.

- Orders must be submitted via EDI.
- Orders received before 3:00 pm (EST) Mon-Fri will be accepted on the same business day.
- Orders received after 3:00 pm (EST) Mon-Fri will be accepted on the next business day.
- Orders received on Saturday or Sunday will be accepted on the next business day.

RTV Procedures

For any questions, please contact Customer Care at (800) 230-5661.

- If product was mis-shipped or an order entry error occurred, contact Customer Care for disposition.

Damage and Shortage

- Reorder products or parts for consumer without delay. Replacements will be expedited as quickly as possible.
- If damage occurred during transit, request the store's receiving department to file a freight claim.
- All shortages must be reported to carrier within 30 days.

Manufacturing or Product Defect

- If the product has a manufacturing product defect, process RTV for credit.

**Cancellations or Customer Return Requests:** CANCELLATIONS OR CHANGES TO ORDERS ARE NOT ALLOWED AFTER 48 HOURS FROM RECEIPT OF THE STORE PURCHASE ORDER.

Care & Cleaning

- For normal spills, a damp cloth is sufficient. Remember to dry the surface immediately.
- RTF doors can be cleaned with most general purpose household kitchen or bath cleaners.
- Wood doors can be cleaned with most general purpose household cleaners and polished with most furniture care products, not containing wax, petroleum solvents or silicones.
- Do not use caustic agents and/or abrasive scrubbers or oven cleaners.
- Nicks and dings can be repaired with touch-up kits.
- For stains that persist, flakes of Ivory soap diluted in warm water may be used. Remember to dry the surface immediately.
- Cabinets can be cleaned with a damp sponge, a cloth using soapy water, or most general purpose household cleaners. Do not use any type of abrasive cleaner or scrubbers.
- Do not let liquids stay on the surface for a long period of time. The surface is water resistant, not waterproof.

Continuous Improvement

In keeping with our policy of continuous product refinement, Hampton Bay Designer Series reserves the right to change specifications in design and materials as conditions require.

Disclaimers

**HARDWOOD:** Hardwoods have a dense structure and come from broad leaved deciduous trees such as maple, oak, birch, cherry, hickory, poplar, or ash species. We use a combination of these to achieve a great looking and highly durable product. Natural features include:

- Light blonde to dark reddish brown tones
- Small black and reddish brown mineral streaks or deposits that darken with stain
- Wavy, curly bird’s-eye, or burl graining as well as worm tracking across the grain that will darken when stained
- Variations within a single door

**COLOR VARIATION:** Individual distinctions are part of the beauty of any wood product. These naturally occurring variations create a sophisticated charm that makes your cabinets one of a kind. Wood species in all finishes will naturally exhibit color variations and changes depending on the type of soil it was grown in, the weather or when exposed to different types of light and environments over time. Such color changes are expected and as such each door will be consistently unique.

**MINERAL STREAKS:** Mineral streaks are common and may form in the wood as the tree extracts nutrients from the soil. These mineral deposits cause blackish-blue streaks in the grain that may appear darker when stained.

These naturally occurring characteristics should not be considered a defect or an irregularity with the product.

**Preventing Heat and/or Humidity Damage:** Various cooking ovens, ranges, cook tops, cooking pots, toasters and other small appliances produce high heat and/or humidity. It is very important to make sure these products are positioned so rising heat is not trapped or confined, otherwise, you risk damage to cabinets or moldings that are not covered under the warranty. In addition, if higher temperature settings are used for extended periods of time, the radiant heat may be excessive and the doors and drawer fronts should be shielded or removed. This is particularly important on RTF doors, which cannot be exposed to extended temperatures beyond 160°F without risking permanent damage. We recommend the use of a heat deflector (AKHD - page 18) for RTF kitchen installations.

**WARNING:** This product can expose you to chemicals including formaldehyde, which is known to the State of California to cause cancer, and methanol, which is known to the State of California to cause birth defects or other reproductive harm. For more information, go to **www.P65warnings.ca.gov**

Limited Lifetime Warranty

This warranty covers defects in materials and workmanship in your Hampton Bay Designer Series Kitchen products under normal home use. This warranty is offered only to the original residential consumer purchaser ("the Consumer") and may not be transferred.

**What This Warranty Covers:** American Woodmark Corporation ("AWC"), the manufacturer of these Hampton Bay Designer Series products, warrants its parts and products to be free of defects in materials and workmanship from the original date of purchase under normal home use. This warranty is offered to the original residential consumer purchaser only and may not be transferred.

**How Long The Warranty Lasts:** The coverage of this warranty lasts for the lifetime of the original purchaser, so long as he or she owns the home in which the product was first installed.

**Warrantor:**  
American Woodmark Corporation  
561 Shady Elm Road  
Winchester, VA 22602  
(800) 230-5661  
HamptonBayKitchens.com

**What American Woodmark Will Do Under The Warranty:** During the warranty period, AWC, at its option, will repair or replace any part or product that proves to have substantial defects in materials or workmanship, or AWC will provide an equivalent replacement product, at no cost to the Consumer. AWC reserves the right to change specifications in design and materials without notice and with no obligation to retrofit products we previously manufactured.

**Duties of the Consumer:** If you purchased Hampton Bay Designer Series cabinetry and need a replacement part or would like to file a warranty claim, IMMEDIATELY NOTIFY AWC BY E-MAIL (HBDesignerseries\_CC@woodmark.com) OR TELEPHONE (800-230-5661) OF THE ISSUE. You must provide a copy of the original sales receipt from your purchase.

**Hand Carving, Wood, Aging And Printing Limitations:** Because of the varying natural characteristics of wood and the effects of aging, product shown in displays and/or printed materials will not be an exact match to new cabinetry you will receive. Depending on the wood characteristics, the age of a sample and the environment of the showroom, samples will show some degree of variation from new product. In addition, you should not expect all doors, drawer fronts, trim or molding to match exactly in either finish or grain. Variation in wood is normal and unavoidable. In addition, it is not possible to match our colors exactly in printed materials. Therefore, you should view the actual samples when making your color selection. Slight variation in size and design is also characteristic of individually hand-carved items. This variation can occur from carving to carving, which only adds to their uniqueness and beauty.

**Limitations and Exclusions:** This warranty does not cover defects or damage which result from commercial use, improper transportation, improper installation, use of unauthorized parts, mishandling, misuse, abuse, neglect, abnormal use, improper maintenance, non-AWC repairs, accidents, impact, or acts of God, such as hurricanes, fire, earthquakes or floods, normal wear and tear, alterations, environmental conditions, humidity absorption, or mold. This warranty, and any applicable implied warranties, does not cover incidental or consequential damages arising from any defects in the product, such as labor charges for installation or removal of the product or any associated products. In addition, variations in hand carved items, wood grain, finish color, aging or other natural wood and stain characteristics are not considered defects and are not covered by this warranty.

**Disclaimers and Rights:** AWC disclaims any implied warranty of merchantability, and there are no express warranties other than those set forth herein. ANY WARRANTY IMPLIED BY STATE LAW (WHETHER OF MERCHANTABILITY OR FITNESS FOR A PARTICULAR USE OR OTHERWISE) SHALL BE EFFECTIVE FOR ANY PRODUCT ONLY FOR THE DURATION OF THE APPLICABLE LIMITED WARRANTY PERIOD LISTED ABOVE. SOME STATES DO NOT ALLOW THE EXCLUSION OR LIMITATION OF INCIDENTAL OR CONSEQUENTIAL DAMAGES, SO THE ABOVE LIMITATION OR EXCLUSION MAY NOT APPLY TO YOU. THIS WARRANTY GIVES YOU SPECIFIC LEGAL RIGHTS, AND YOU MAY ALSO HAVE OTHER RIGHTS THAT VARY FROM STATE TO STATE.

HAMPTON BAY®

DESIGNER SERIES



9-25

(800) 230-5661  
[www.hamptonbaykitchens.com](http://www.hamptonbaykitchens.com)  
[HBDesignerSeries\\_CC@Woodmark.com](mailto:HBDesignerSeries_CC@Woodmark.com)

