



Your complete cabinet solution.

Why choose PROFOLIO by American Woodmark?

- Budget priced
- In-stock
- 9 door style/finish combinations
- Framed construction
- Quick ship
- Truckload discounts
- Fully assembled stock cabinets
- Limited lifetime warranty

- Value priced
- Special order
- 10 door styles/finish combinations
- Frameless construction
- Quick ship
- Truckload discounts
- Stock plus
- Limited lifetime warranty

- Everyday low price
- Special order
- Most popular styles and SKUs
- Framed construction
- Express ships in 10 days
- Free jobsite delivery, no minimum
- Fully-loaded construction
- Limited lifetime warranty

- Everyday low price
- Special order
- 200+ style/finish options
- Framed construction
- Express manufacturing option
- Free jobsite delivery, no minimum
- Semi-custom construction upgrades
- Limited lifetime warranty

Program Features

HAMPTON BAY

HAMPTON BAY
DESIGNER SERIES

simply
woodmark PRO

American
woodmark PRO

	HB	HBDS	SIMPLY WOODMARK PRO	AW PRO
# of Door Styles	3 door styles plus unfinishes*	4	2	13
# of Finishes	7 finishes plus unfinished*	7	2	27
Consumer & Store Order Options	Stock & online**, SO/EO (2020), Quote Center (where available in-stock)	Online, SO (2020), Quote Center	Online, Quote Center	SO (2020), Quote Center (available for most popular doors, finishes and SKUs)
Lead Time	Online ships in 2 days, EO and Quote Center ships in 2 weeks	Ships in 2 weeks	Ships in 10 days	Delivers in 3–4 weeks Express Delivery available (additional fees apply)
Jobsite Delivery	Delivers free to the jobsite in 3 weeks (applies to ½ and full truckloads when ordered through the Quote Center only)	THD.com only \$99 Delivers free to the jobsite in 3 weeks (applies to 1/2 and full truckloads when ordered through the Quote Center only)	Free jobsite delivery	
Warranty	Limited lifetime			
Volume Discounts	10% off for 10+ cabinets (store, EO, & Quote Center) 20% off for 75+ cabinets (1/2 truckload) – applies to QC orders only 25% off for 150+ cabinets (full truckload) – applies to QC orders only		Volume discounts available	
Construction				
Construction Type	Framed	Frameless	Framed All-Plywood	Framed Plywood upgrade available
# of SKUs per Finish	105	177	125	1,500+
Standard Drawer Construction	Ball-bearing, hardwood drawer box	Full access soft-close & dovetail drawer box	Full access soft-close & dovetail drawer box with plywood bottoms	
Hinges & Glides	Fully concealed and adjustable	Soft-close doors & drawers	Soft-close on doors & drawers	Soft-close on doors, drawers and rollouts; option to select non-soft-close if needed
Service				
Customer Care	1.888.578.4009	1.800.230.5661	1.800.677.8182	
PRO Customer Care	1.855.HDPRO44 hdpro@woodmark.com			
Website	www.hamptonbaycabinets.com	www.hamptonbaykitchens.com	www.woodmarkcabinetry.com/pros/simply-woodmark-pro	www.woodmarkcabinetry.com/pros

*Unfinished product specifications and SKU listing vary **Available in-stock and online. Availability may vary by market. +Available In-Stock and online. Availability may vary by market. *Unfinished product specifications and SKU listing vary.

Purchasing Made Easy for Pros

	HAMPTON BAY	HAMPTON BAY DESIGNER SERIES	SIMPLY WOODMARK PRO	AMERICAN WOODMARK PRO
In-Stock*	■			
HomeDepot.com*	■	■	■	
Quote Center	■ where available in-stock	■	■	
Special Order (2020)	■	■	■	■

Collections – Hampton Bay

Shaker



Satin White RTF
■ Full overlay



Dove Gray RTF
■ Full overlay



Java
■ Full overlay

Sinclair



Light Oak
■ Full overlay



Saddle Oak
■ Full overlay

Hampton



Satin White RTF
■ Full Overlay



Natural Hickory
■ Partial Overlay



Medium Oak
■ Partial Overlay

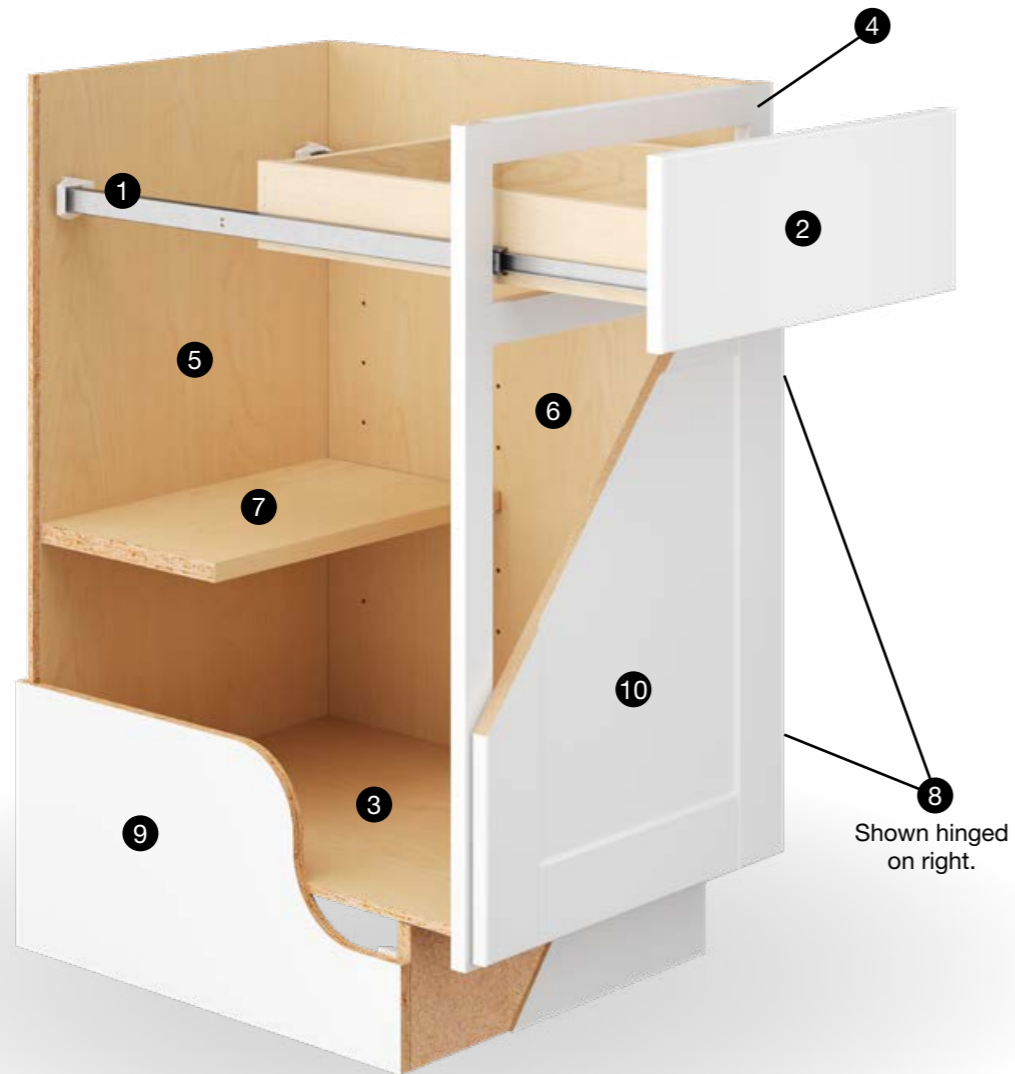
Unfinished



Unfinished
■ Partial Overlay



Construction – Hampton Bay



Base Cabinets

- ① **Drawer Glides:** Finished cabinetry – Ball-Bearing Unfinished cabinetry – Epoxy.
- ② **Drawer Box:** Hardwood 4-sided drawer box with fully encapsulated bottom panel.
- ③ **Bottom Panels:** 3/8" engineered wood fully encapsulated in the face frame, back and side panels.
- ④ **Face Frame:** Pocket screw construction with 3/4" thick, 1½" wide material.
- ⑤ **Back Panel:** Full 3/8" hardboard with a natural maple laminate interior. Sink bases must be cut for plumbing access.
- ⑥ **Interiors:** Natural maple laminate finish on engineered wood.
- ⑦ **Shelf:** 3/4" thick adjustable half-depth shelf.
- ⑧ **Hinges:** Fully concealed and adjustable.
- ⑨ **End Panels:** Finished cabinetry – 1/2" engineered wood with laminated exterior to match cabinet finish. Unfinished cabinetry – 1/2" engineered wood with raw exterior.
- ⑩ **Door:** Reversible door on single-door cabinets for left or right opening. Hinged on the left from the factory. Double door cabinets are full-access, no center stile.

Collections – Hampton Bay Designer Series

Melvern



White RTF

Cloud RTF

Heron Gray RTF

Storm Gray RTF

Forest RTF

Elgin



White RTF

Heron Gray RTF

Edgeley



White RTF

Driftwood RTF

Soleste



Spice





Base Cabinets

- ❶ **Top Panel:** 5/8" plywood rails.
- ❷ **Bottom Panel:** 5/8" laminated furniture board.
- ❸ **Back Panel:** 1/4" laminated furniture board with 4" x 5/8" plywood mounting rail.
- ❹ **Shelf:** Fully adjustable 3/4" laminated furniture board.
- ❺ **End Panels:** 5/8" laminated furniture board.

Note: Any cabinet with a matching interior will be constructed (top, bottom, back, shelves and sides) from 5/8" material.

Collections – Simply Woodmark PRO

Shaker Partial Overlay



Painted Linen

Shaker Full Overlay

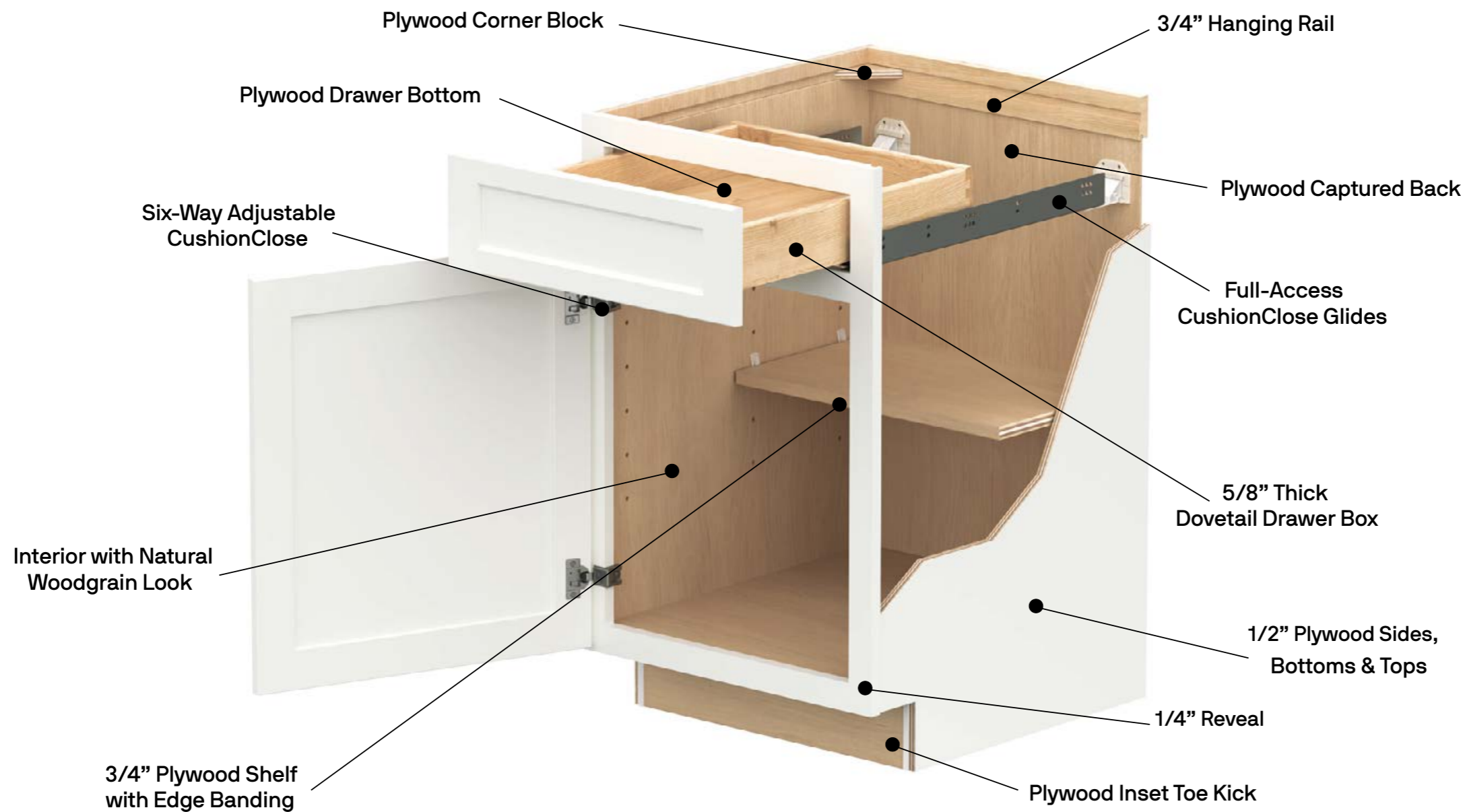


Painted Stone

Painted Linen



Construction – Simply Woodmark PRO



Collections — American Woodmark PRO

We offer more choices with a wide range of styles from traditional to contemporary.

<p>MacArthur</p> 	<p>Savannah</p> 	<p>Reading</p> 	<p>Portola</p> 	<p>Hanover</p> 	<p>Remy</p> 	<p>Brookland</p> 
<ul style="list-style-type: none"> ■ Full overlay mitered ■ Recessed panel 	<ul style="list-style-type: none"> ■ Full overlay mitered ■ Raised panel 	<ul style="list-style-type: none"> ■ Full overlay, with 3" frame ■ Recessed Shaker panel 	<ul style="list-style-type: none"> ■ Full overlay ■ Raised panel 	<ul style="list-style-type: none"> ■ Full overlay ■ Slab veneer panel with solid wood edge banding 	<ul style="list-style-type: none"> ■ Full overlay mitered, with 3/4" frame ■ Recessed Shaker panel 	<ul style="list-style-type: none"> ■ Full overlay mitered ■ Recessed panel
<p>Garner</p> 	<p>Leesburg</p> 	<p>Adelaide</p> 	<p>Westerly</p> 	<p>San Mateo</p> 	<p>Glen Ellen</p> 	
<ul style="list-style-type: none"> ■ Full overlay mitered ■ Recessed panel 	<ul style="list-style-type: none"> ■ Full overlay, with 2-1/4" frame ■ Recessed Shaker panel 	<ul style="list-style-type: none"> ■ Full overlay ■ Recessed panel 	<ul style="list-style-type: none"> ■ Full overlay ■ Raised panel 	<ul style="list-style-type: none"> ■ Partial overlay ■ Recessed Shaker panel 	<ul style="list-style-type: none"> ■ Partial overlay mitered ■ Recessed panel ■ Only available in Duraform 	

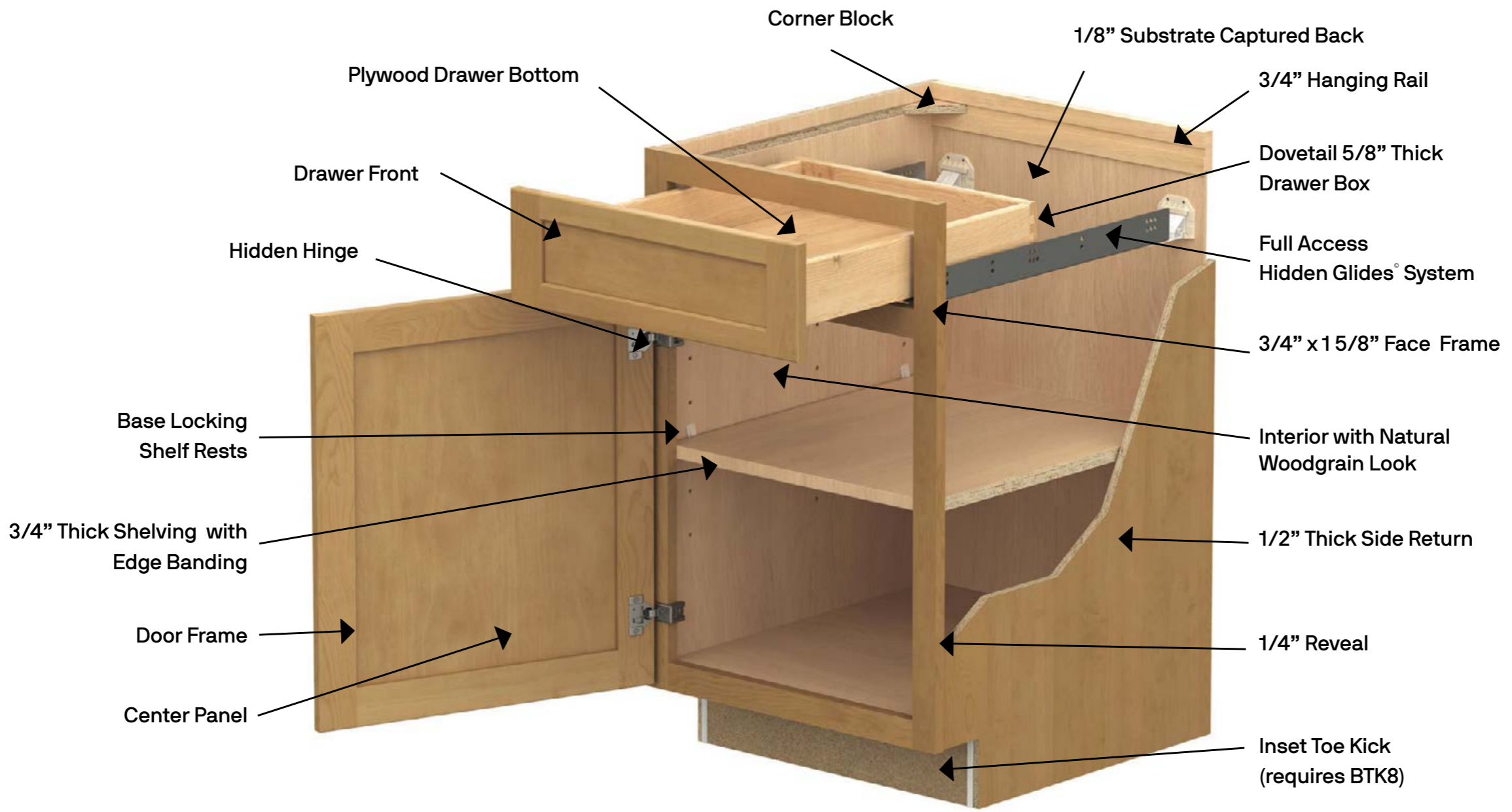


Finishes – American Woodmark PRO

	PAINTED											MAPLE						CHERRY			DURAFORM								
	LINEN	PEWTER GLAZE	VANILLA	BISCOTTI GLAZE	HARBOR	EMBER GLAZE	STONE	BOULDER	SAGE	MIST	NAVY	BLACK	RYE	COGNAC	ALMOND	LATTE	TRUFFLE	SLATE	AMBER	CLOVE	SLATE	LINEN	HARBOR	STONE	ESPRESSO	BREEZE	DRIFT		
MacArthur®																													
Savannah®																													
Reading®																													
Portola®																													
Garner®																													
Brookland®																													
Remy™																													
Hanover™																													
Leesburg®																													
Adelaide™																													
Westerly™																													
San Mateo®																													
Glen Ellen®																													



Construction – American Woodmark PRO



Construction – American Woodmark PRO

Standard Construction

- 1/2" Thick Side Return
- Full Access Hidden Glides® System.
- 3/4" thick shelving with edge banding.
- Adjustable drawer front with 5/8" dovetail box and plywood bottom.
- 1/2" engineered wood inset toe kick.

Quality Features

- Full Access Hidden Glides® System.
- Hardwood drawers with dovetail construction.
- 6-way adjustable hinges.
- Kiln-dried face frames.

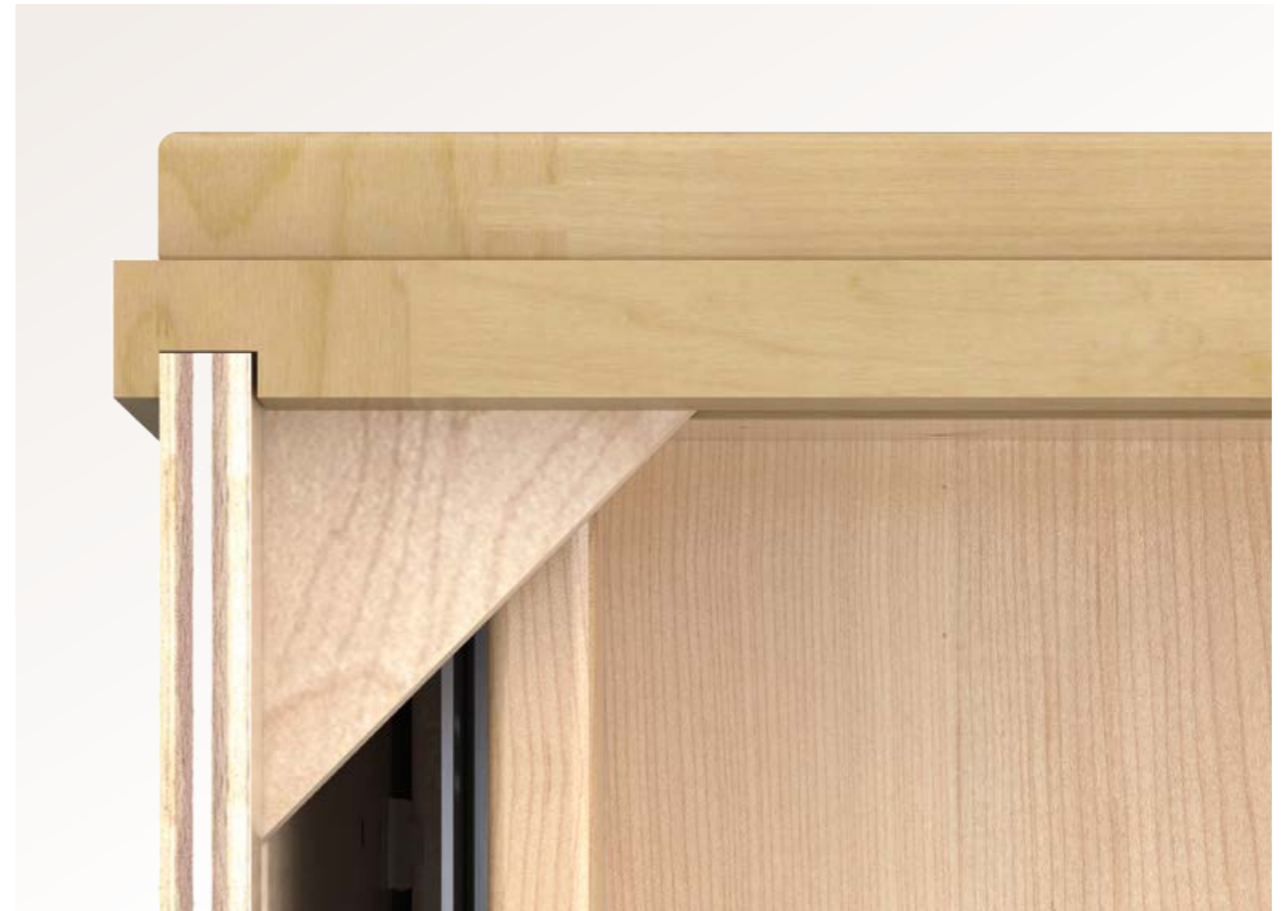
Plywood Ends Option

- 1/2" plywood sides.

All Plywood Construction Option

- 1/2" plywood sides, floors and cabinet tops.
- 3/4"-thick plywood shelving with edge banding.
- 1/2" plywood inset toe kick.

All Plywood Construction refers to the cabinet box components and shelving as detailed in our specification guide (woodmarkcabinetry.com/specguide.asp). Plywood components meet the Decorative Hardwoods Association's standards for hardwood and decorative plywood (www.decorativehardwoods.org).



American Woodmark PRO Drawer Construction

Cabinets utilize natural finish dovetail hardwood drawers with plywood bottoms and Full Access Hidden Glides® or Full Access CushionClose® Glides. All drawers meet KCMA load standards of 15 pounds per square foot.

Options for American Woodmark PRO



Inverted Frame

By inverting the frame, the drawer is placed at the bottom of the cabinet. This helps raise internal organizational items and also allows standard cabinets to be used as sink bases when needed.



Increased/Reduced Depth

Adding or reducing depth in one-inch increments creates a custom look and more design flexibility. This can be helpful in accommodating larger items or designing around obstructions.



Furniture Ends

The 1/4" face frame reveal is removed for a clean, furniture look on exposed cabinet ends and islands. This makes molding wraps easier and saves installation time.



Recessed Toe Kick

Create a more finished look to the end of a cabinet run or an island with this important ergonomic element.

Keep it Quiet with CushionClose®

Enjoy the whisper-quiet luxury of a complete CushionClose kitchen. With smooth, self-closing performance, CushionClose reduces slams, noise and finger pinching. This unique technology comes automatically on all doors, drawers and roll outs, unless de-selected as an option.



Drawers



Roll Outs



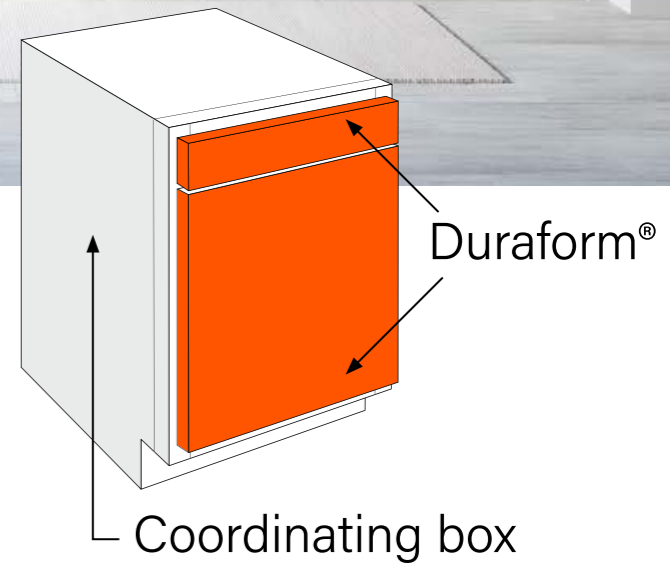
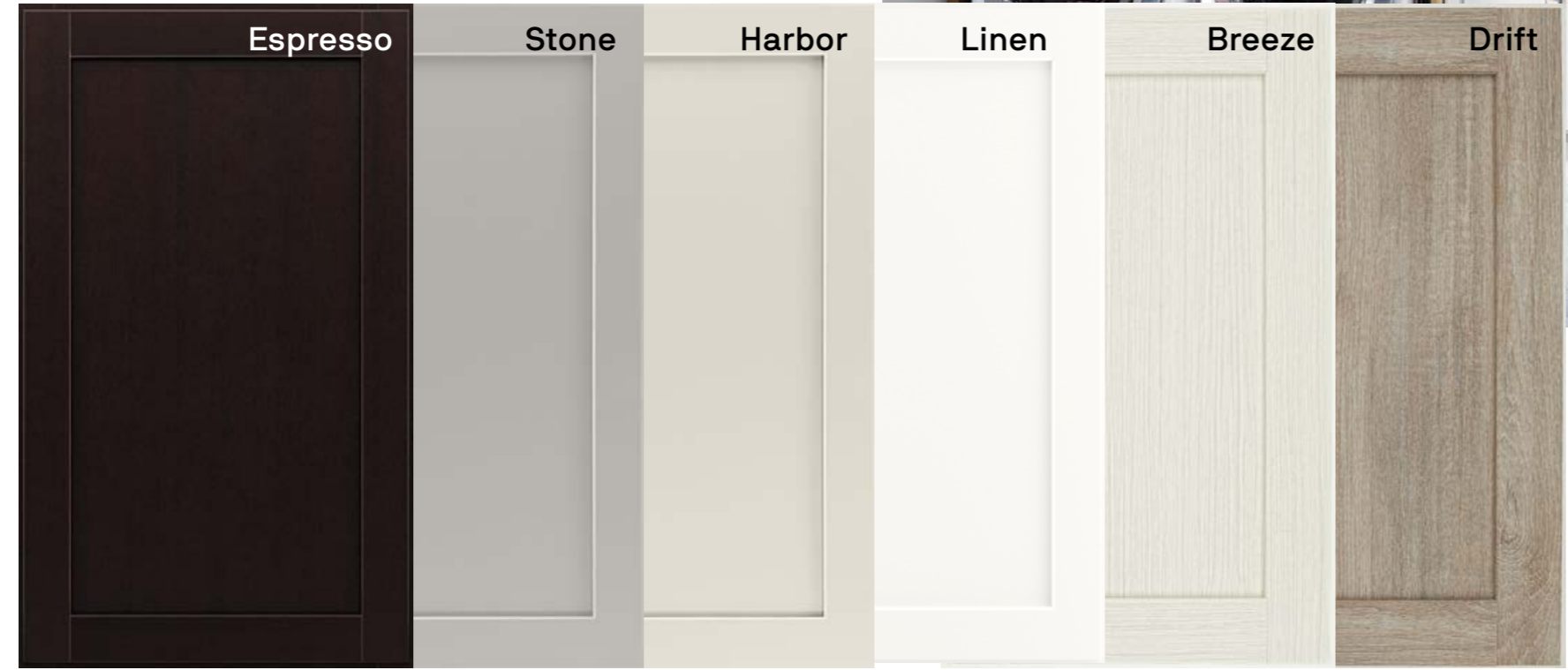
Doors



Options for American Woodmark PRO

Duraform®

Duraform® uses foils and coatings bonded to warp-resistant composite wood. Advanced technology provides consistent finishes that are durable, easy to clean and resistant to heat, humidity and fading. Available in Espresso, Stone, Harbor, Linen, Breeze on coordinating Linen box, and Drift on coordinating Harbor box.



Accessibility

To support the growing number of homeowners remodeling for current and future needs, we've created an accessible height modification that reduces toe kicks to allow for ADA-compliant work surface heights. This alteration is ideal for pros working on projects with ADA requirements and customers looking to "age in place" by living longer in their homes.

Product Highlights

- The Accessible Height option improves function and access for all — regardless of age or ability
- Base Cabinets, Sink Base Cabinets, and Drawer Base Cabinets 32 ½" high provide lower work surfaces
- HUD Compliant

NOTE: Product specifications are available as a digital copy on Designer Resources at resources.woodmarkcabinetry.com.

Other new offerings include additional plumbing skirt cabinets, Adaptable Sink Base Kits, and drop-in drawer work surfaces.

34.5" Tall Plumbing Skirt

BPS3034 UD
BPS3634 UD

Adaptable Sink Base Kit

30" Wide

ASB3034 KIT (W3024 BUTT CFO)
ASB3032 KIT (W3021 BUTT CFO)

36" Wide

ASB3634 KIT (W3624 BUTT CFO)
ASB3632 KIT (W3621 BUTT CFO)



Drawer Work Surface

DWS21



All American Woodmark products meet or exceed the stringent performance requirement established by the Kitchen Cabinet Manufacturers Association (KCMA). The KCMA Performance & Construction Standards ANSI/KCMA A161.1 is recognized & over-seen by the American National Standards Institute. This standard also meets the HUD specification 4910.1 Paragraph 611-1.1, Minimum Property Standards for Housing.

Decorative Accents and Moldings



See our full decorative accents and moldings selection at WoodmarkCabinetry.com.



Storage and Organization Solutions



See our full storage and organization solutions selection at [WoodmarkCabinetry.com](https://www.WoodmarkCabinetry.com).



Accessories

Accent Doors and Glass Insert



CLEAR GLASS



DERBYSHIRE



MEREDITH



IMPRESSION



RIBBED



FROSTED GLASS



FROSTED ASH



MULLION FRAME



Accessories

Knobs & Pulls – Tier 1

Accentuate your style with quality hardware. Grouped in three price tiers, and available in a variety of looks and colors, it's easy to find just the right piece at just the right price.

Classic Knobs and Pulls



Satin Nickel
PULL 3172SN



Verona Bronze
PULL 3172VB



Matte Black
PULL 3172MB



Satin Nickel
KNOB 3173SN



Weathered Nickel
KNOB 3173WN



Modern Brushed Gold
KNOB 3173MG



Verona Bronze
KNOB 3173VB



Matte Black
KNOB 3173MB

Bow Pull - 6 3/16"



Polished Chrome
PULL 3128PC



Satin Nickel
PULL 3128SN



Modern Brushed Gold
PULL 3128MG



Brushed Copper
PULL 3128CP



Matte Black
PULL 3128MB

T-Bar Pull - 5 5/16"



Polished Chrome
PULL 4701PC



Satin Nickel
PULL 4701SN



Modern Brushed Gold
PULL 4701MG



Brushed Copper
PULL 4701CP



Matte Black
PULL 4701MB

Ringed Arch Knobs and Pulls



Satin Nickel
PULL 3672SN



Verona Bronze
PULL 3672VB



Matte Black
PULL 3672MB



Satin Nickel
KNOB 3673SN



Verona Bronze
KNOB 3673VB



Matte Black
KNOB 3673MB

Twisted Crescent Pull



Satin Nickel
PULL 3122SN



Verona Bronze
PULL 3122VB



Matte Black
PULL 3122MB

T-Bar Knob



Polished Chrome
KNOB 4703PC



Satin Nickel
KNOB 4703SN



Modern Brushed Gold
KNOB 4703MG



Brushed Copper
KNOB 4703CP



Matte Black
KNOB 4703MB

Toggle Knob



Satin Nickel
KNOB 3239SN



Verona Bronze
KNOB 3239VB



Matte Black
KNOB 3239MB

Button Knob



Satin Nickel
KNOB 3213SN



Verona Bronze
KNOB 3213VB



Matte Black
KNOB 3213MB

Tab Pull - 1 3/4"



Polished Chrome
PULL 1050PC



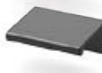
Satin Nickel
PULL 1050SN



Modern Brushed Gold
PULL 1050MG



Brushed Copper
PULL 1050CP



Matte Black
PULL 1050MB

Accessories

Knobs & Pulls – Tier 2






Rectangular Knobs and Pulls

	Polished Chrome PULL 3502PC		Polished Chrome KNOB 3503PC
	Satin Nickel PULL 3502SN		Satin Nickel KNOB 3503SN
	Vintage Nickel PULL 3502VN		Vintage Nickel KNOB 3503VN
	Modern Brushed Gold PULL 3502MG		Modern Brushed Gold KNOB 3503MG
	Matte Black PULL 3502MB		Matte Black KNOB 3503MB

Tempo Knobs and Pulls

	Polished Chrome PULL 0323PC		Polished Chrome KNOB 0322PC
	Satin Nickel PULL 0323SN		Satin Nickel KNOB 0322SN
	Modern Brushed Gold PULL 0323MG		Modern Brushed Gold KNOB 0322MG
	Brushed Copper PULL 0323CP		Brushed Copper KNOB 0322CP
	Matte Black PULL 0323MB		Matte Black KNOB 0322MB






Bow Pull - 7 13/16"

	Polished Chrome PULL 3129PC
	Satin Nickel PULL 3129SN
	Modern Brushed Gold PULL 3129MG
	Brushed Copper PULL 3129CP
	Matte Black PULL 3129MB

Beaded Pull

	Satin Nickel PULL 3562SN
	Weathered Nickel PULL 3562WN
	Modern Brushed Gold PULL 3562MG
	Verona Bronze PULL 3562VB
	Matte Black PULL 3562MB

T-Bar Pull - 8 5/8"

	Polished Chrome PULL 4712PC
	Satin Nickel PULL 4712SN
	Modern Brushed Gold PULL 4712MG
	Brushed Copper PULL 4712CP
	Matte Black PULL 4712MB

Stamped Knob

	Satin Nickel KNOB 3563SN
	Weathered Nickel KNOB 3563WN
	Verona Bronze KNOB 3563VB
	Modern Brushed Gold KNOB 3563MG
	Matte Black KNOB 3563MB

Cup Pull

	Satin Nickel PULL 3105SN
	Weathered Nickel PULL 3105WN
	Modern Brushed Gold PULL 3105MG
	Verona Bronze PULL 3105VB
	Matte Black PULL 3105MB

Tab Pull - 3"

	Polished Chrome PULL 1055PC
	Satin Nickel PULL 1055SN
	Modern Brushed Gold PULL 1055MG
	Brushed Copper PULL 1055CP
	Matte Black PULL 1055MB

Halo Knob

	Polished Chrome KNOB 3106PC
	Satin Nickel KNOB 3106SN
	Modern Brushed Gold KNOB 3106MG
	Brushed Copper KNOB 3106CP
	Matte Black KNOB 3106MB

Accessories

Knobs & Pulls – Tier 3

Antic Knobs and Pulls



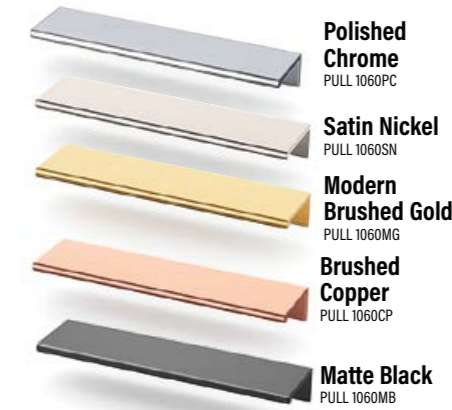
Briolette Knobs and Pulls



Radiant Knobs and Pulls



Tab Pull - 6"



Marquise Pull - 6 7/8"



Marquise Pull - 5 9/16"



T-Bar Pull - 12 7/16"

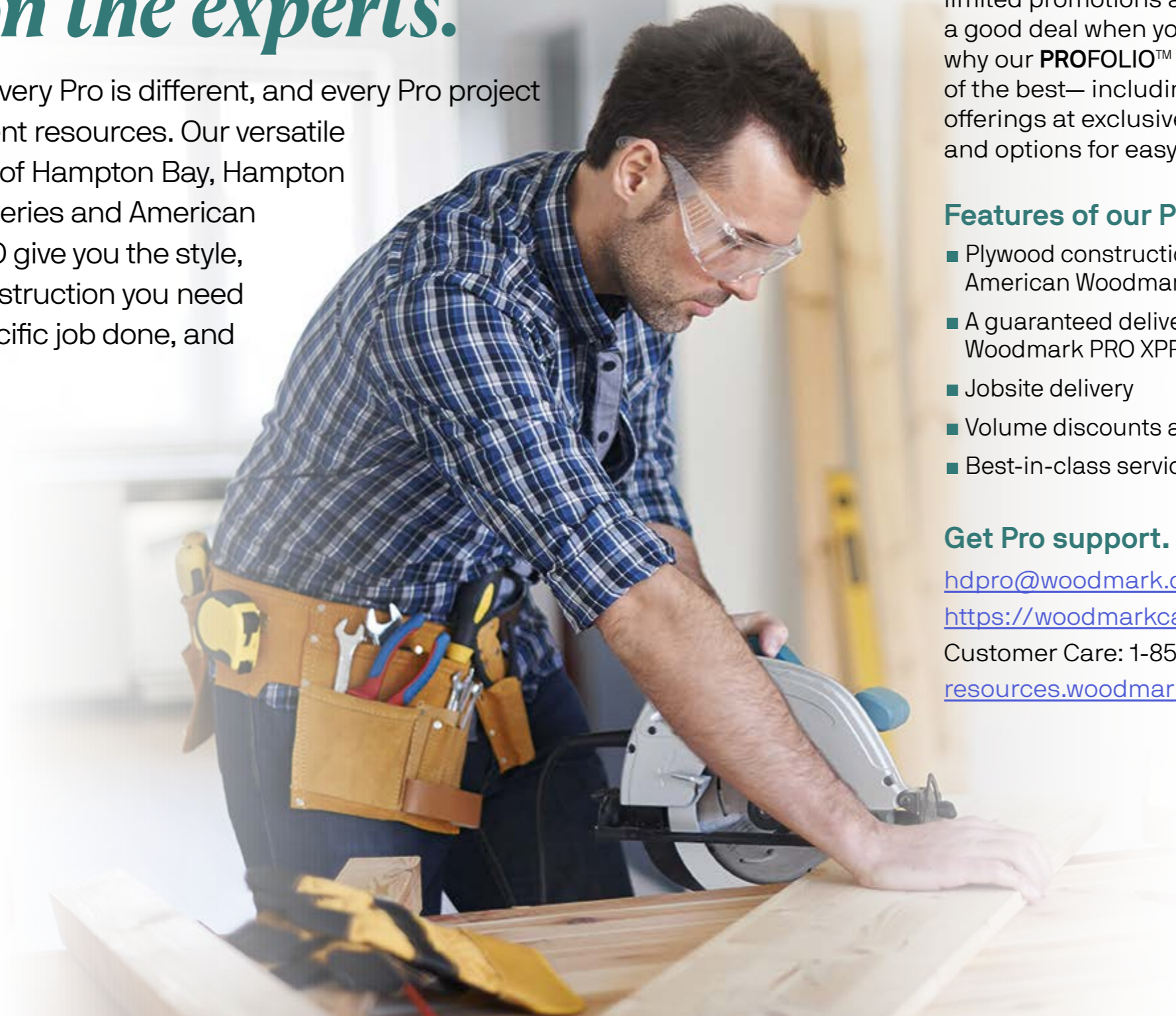


Trillion Knobs and Pulls



Woodmark knows Pros. *Rely on the experts.*

We know that every Pro is different, and every Pro project requires different resources. Our versatile cabinetry lines of Hampton Bay, Hampton Bay Designer Series and American Woodmark PRO give you the style, prices and construction you need to get your specific job done, and done right.



We also know that two of the most important criteria for you when buying are everyday low prices that do not depend on limited promotions and timing. You know a good deal when you see one, which is why our **PROFOLIO™** program offers one of the best— including a complete line of offerings at exclusive everyday low prices and options for easy delivery.

Features of our PROFOLIO program:

- Plywood construction available in American Woodmark PRO®
- A guaranteed deliver-by date with Woodmark PRO XPRESS™
- Jobsite delivery
- Volume discounts available
- Best-in-class service

Get Pro support.

hdpro@woodmark.com

<https://woodmarkcabinetry.com/pros>

Customer Care: 1-855-HDPRO44

resources.woodmarkcabinetry.com/pro

Look what you can do with **PROFOLIO**.

American Woodmark's **PROFOLIO** lineup offers cabinetry solutions for the whole home — kitchens, bathrooms, work spaces, utility spaces and more, and can even extend into commercial spaces, as well! Our collections offer the styles your customers want, with the functions they need, at a price they can afford.

Inspirational Kitchens



Shaker Satin White RTF with Shaker Dove Gray RTF



Sinclair Saddle Oak and Sinclair Light Oak



Hampton Satin White RTF



Hampton Natural Hickory RTF

Inspirational Kitchens



Edgeley White



Melvorn Cloud

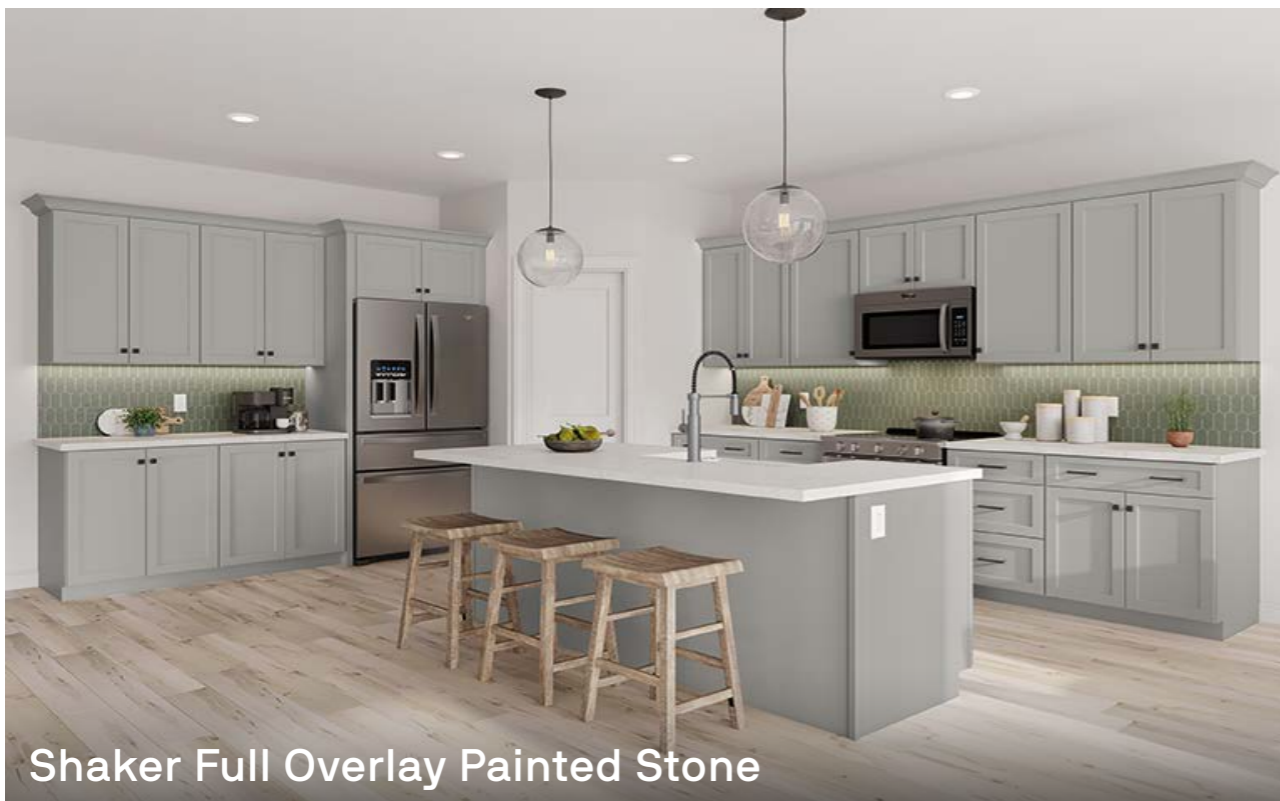
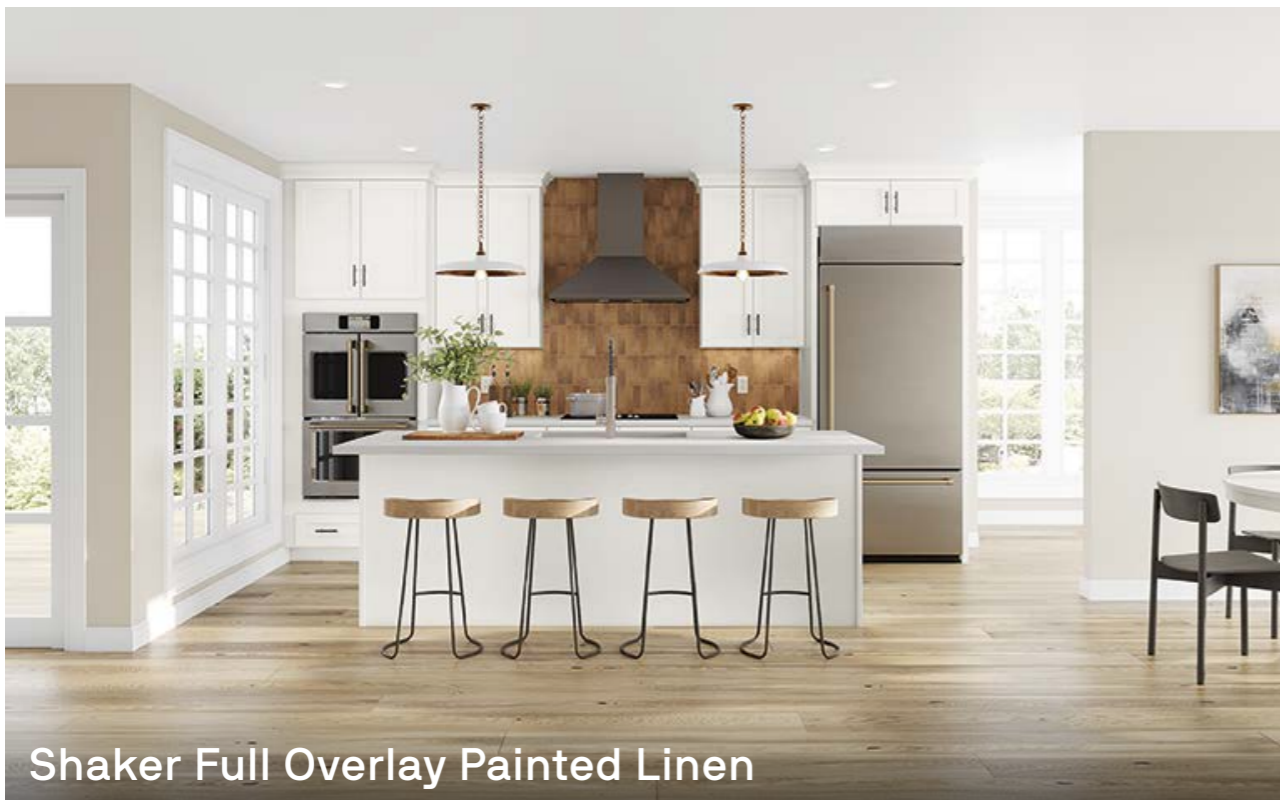


Edgeley Driftwood

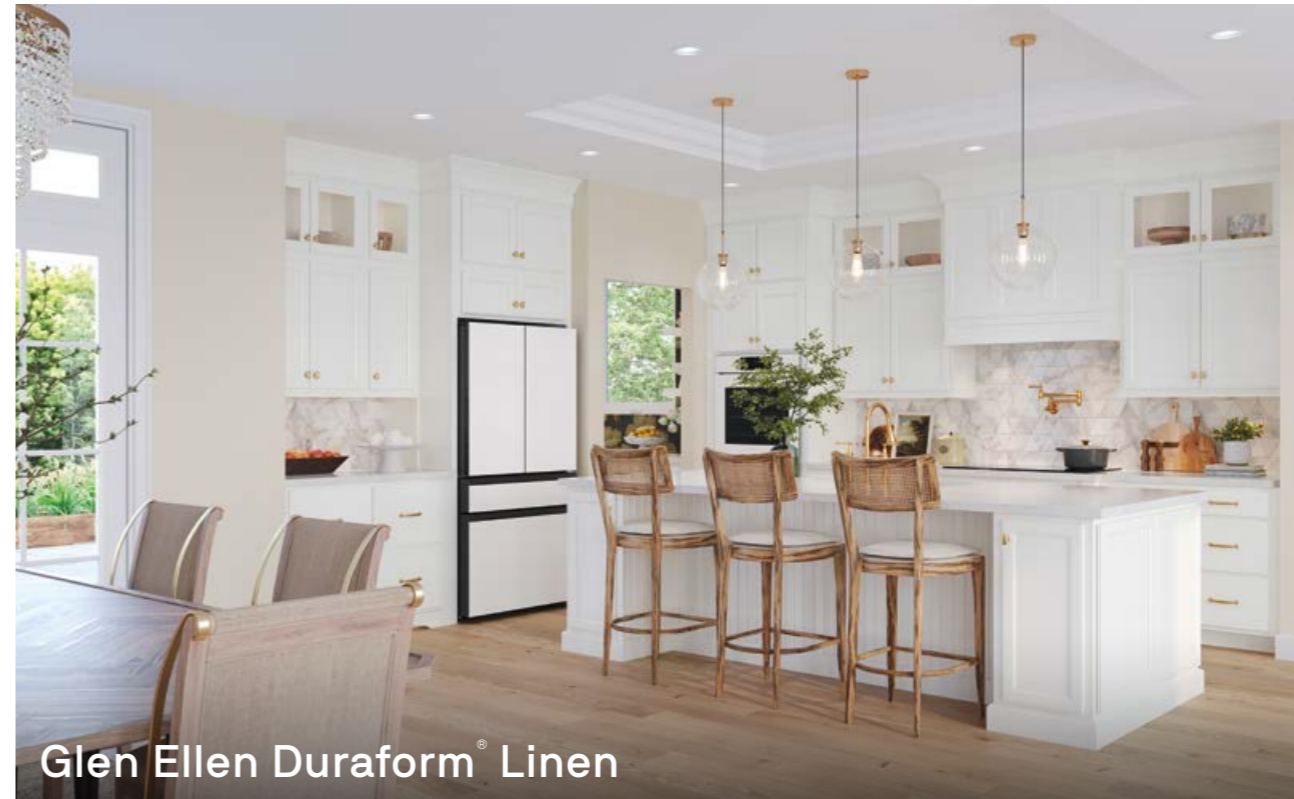


Melvorn Forest

Inspirational Kitchens



Inspirational Kitchens



Inspirational Kitchens



Inspirational Kitchens



Reading Painted Sage, Painted Linen & Cherry Amber



Remy Painted Navy

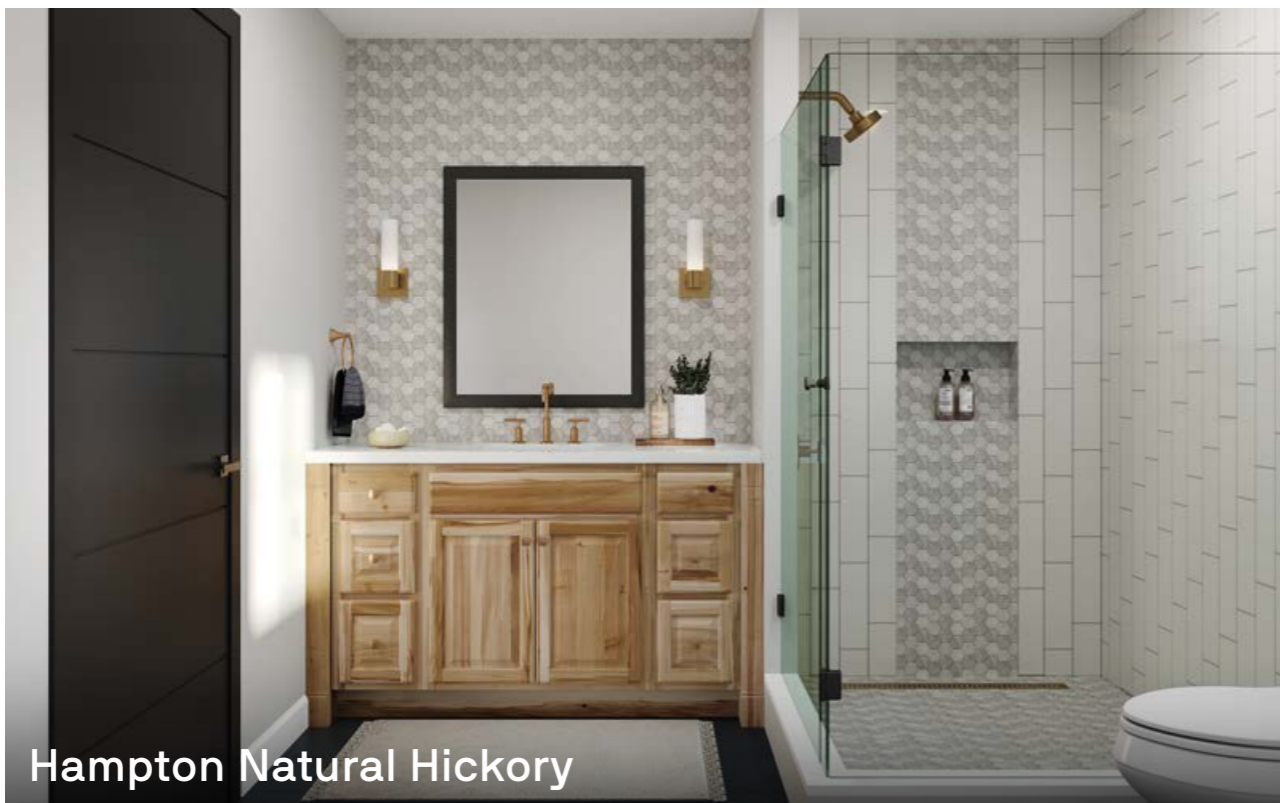


San Mateo Painted Vanilla, Painted Navy & Maple Rye



Westerly Painted Biscotti Glaze

Inspirational Vanities



Inspirational Vanities



Elgin White



Melvorn Forest



Edgeley Driftwood

Inspirational Vanities



Shaker Full Overlay Painted Stone



Shaker Partial Overlay Painted Linen



Shaker Full Overlay Painted Linen

Inspirational Vanities



MacArthur Cherry Clove



Hanover Duraform® Drift



Adelaide Painted Mist



Leesburg Maple Almond

Inspirational Spaces



Shaker Satin White RTF



Sinclair Light Oak



Hampton Satin White RTF

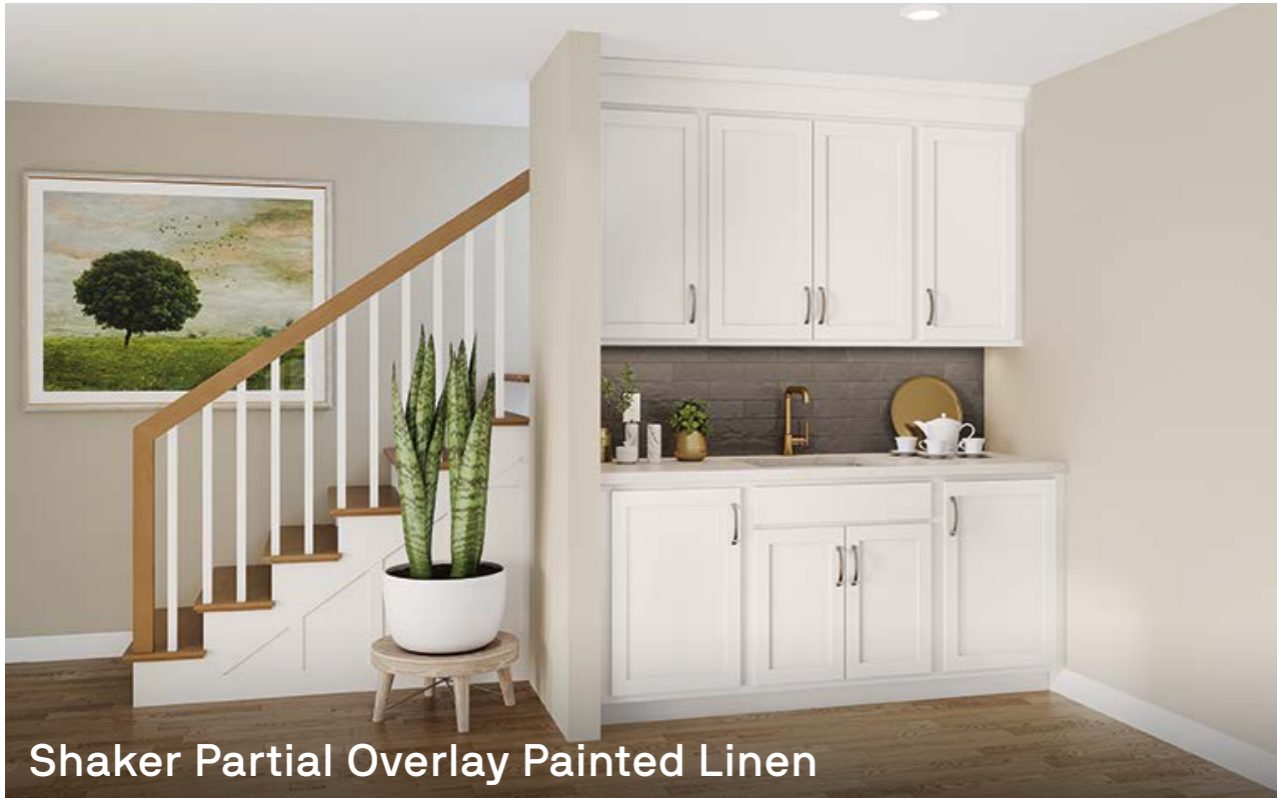


Shaker Dove Gray RTF

Inspirational Spaces



Inspirational Spaces



Shaker Partial Overlay Painted Linen

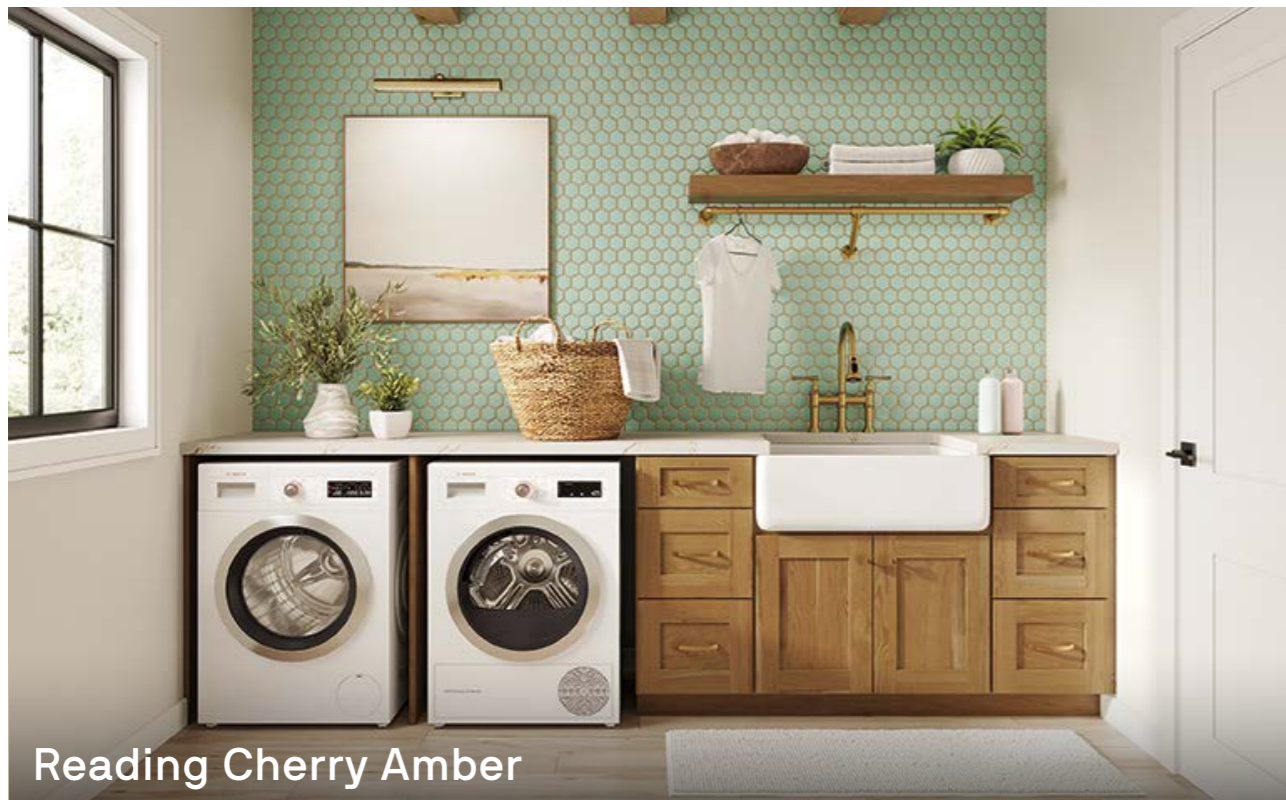


Shaker Full Overlay Painted Stone



Shaker Full Overlay Painted Linen

Inspirational Spaces



Reading Cherry Amber



Hanover Cherry Clove

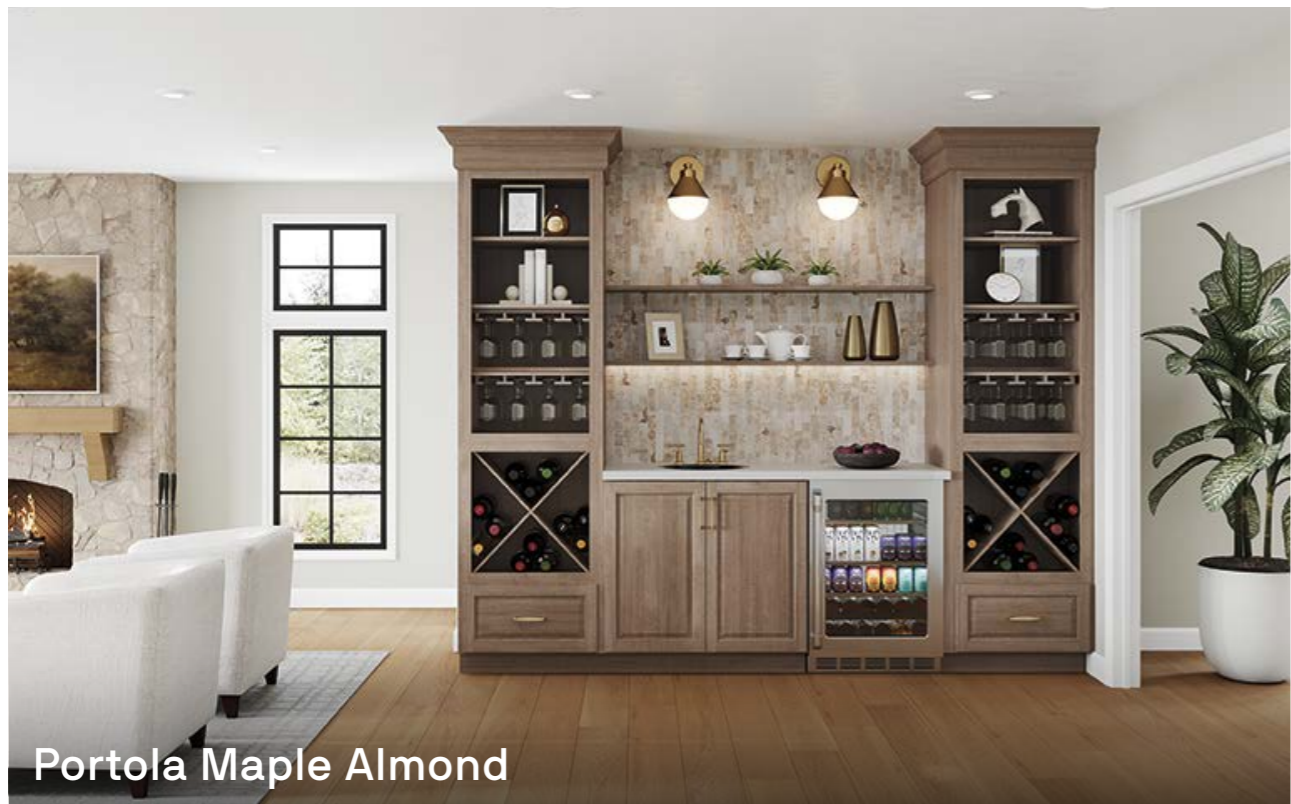


Reading Painted Sage with Painted Linen



San Mateo Duraform® Harbor

Inspirational Spaces



Portola Maple Almond



Hanover Maple Latte

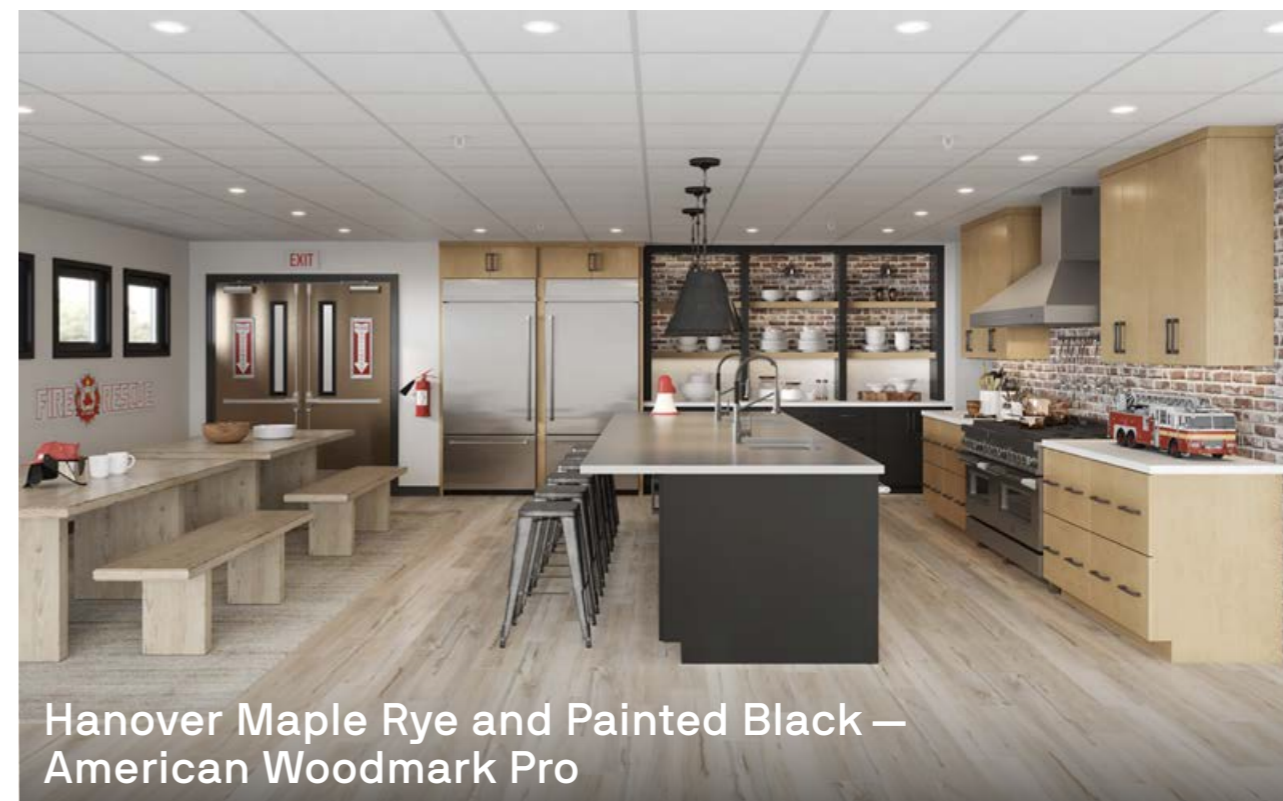
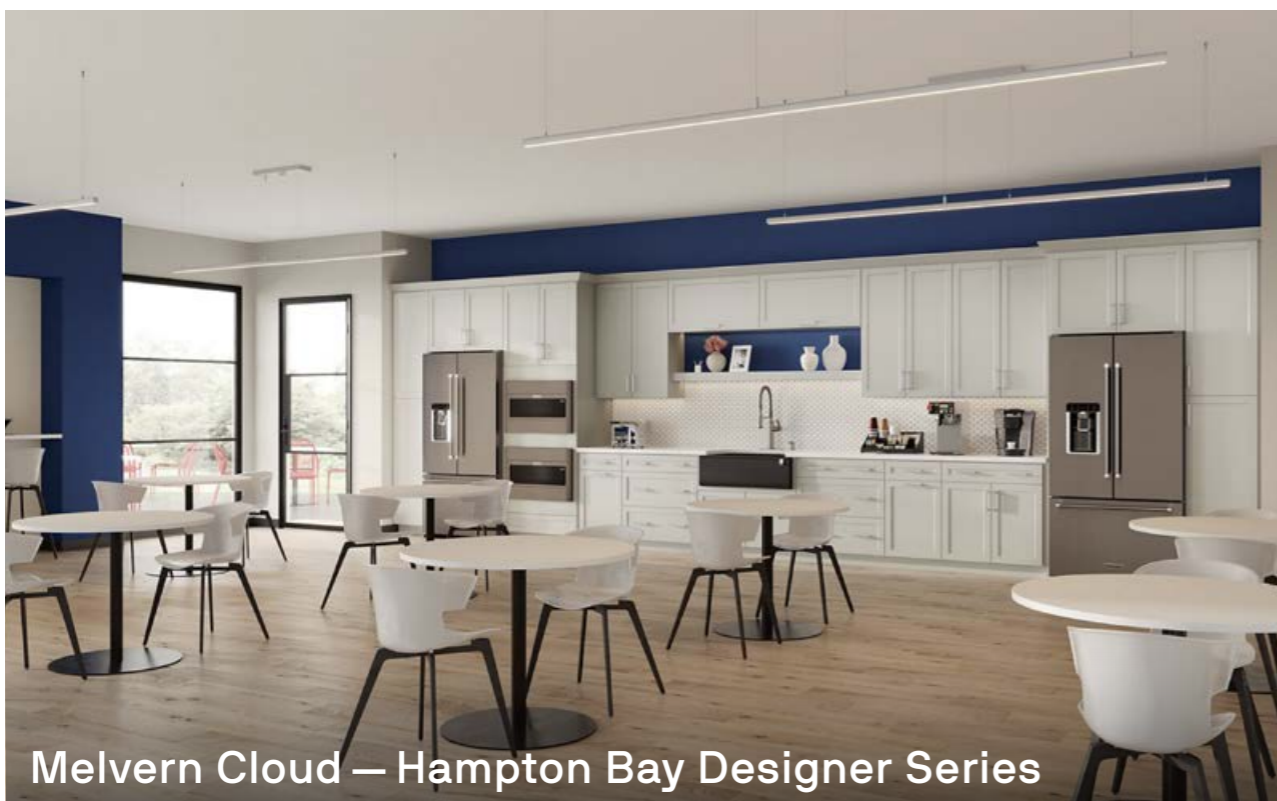
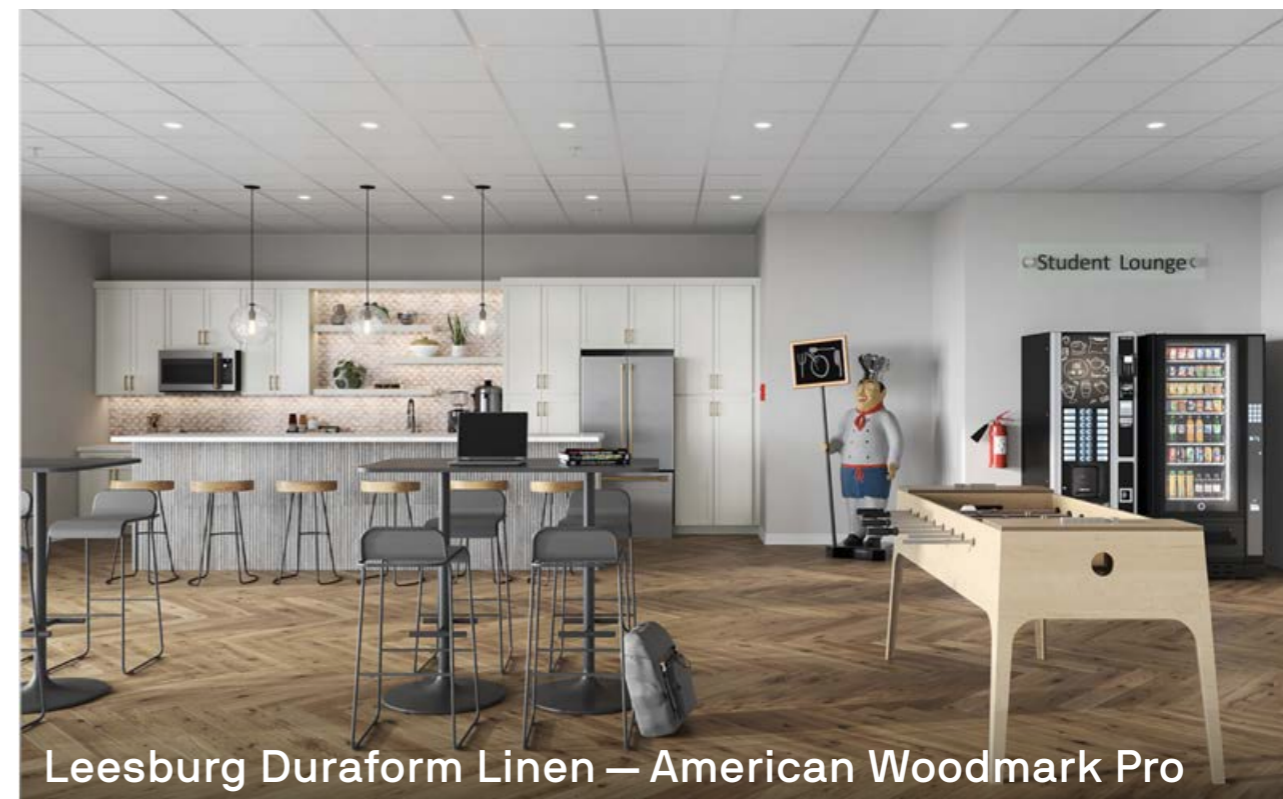


Brookland Duraform® Stone



Westerly Painted Mist

Commercial Spaces



Commercial Spaces



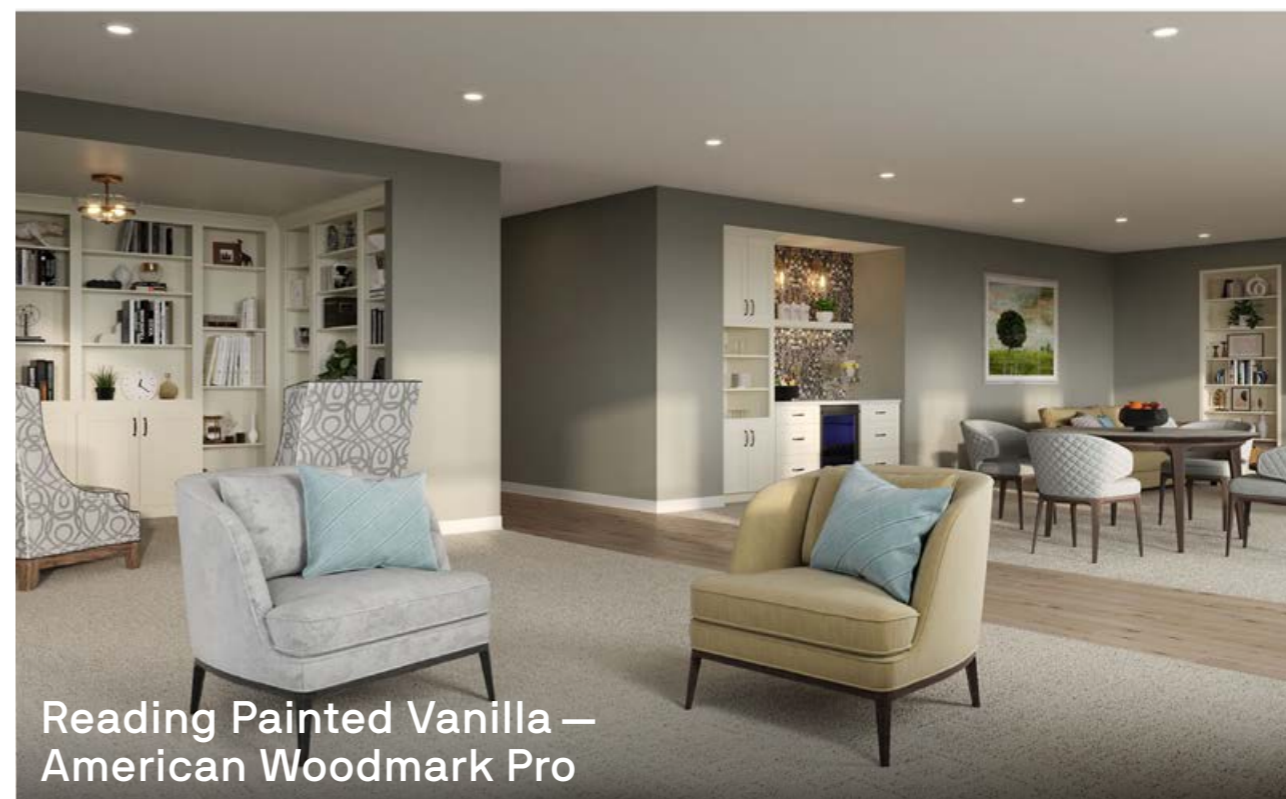
Leesburg Painted Linen — American Woodmark Pro



Westerly Painted Linen — American Woodmark Pro



Westerly Painted Linen — American Woodmark Pro



Reading Painted Vanilla — American Woodmark Pro